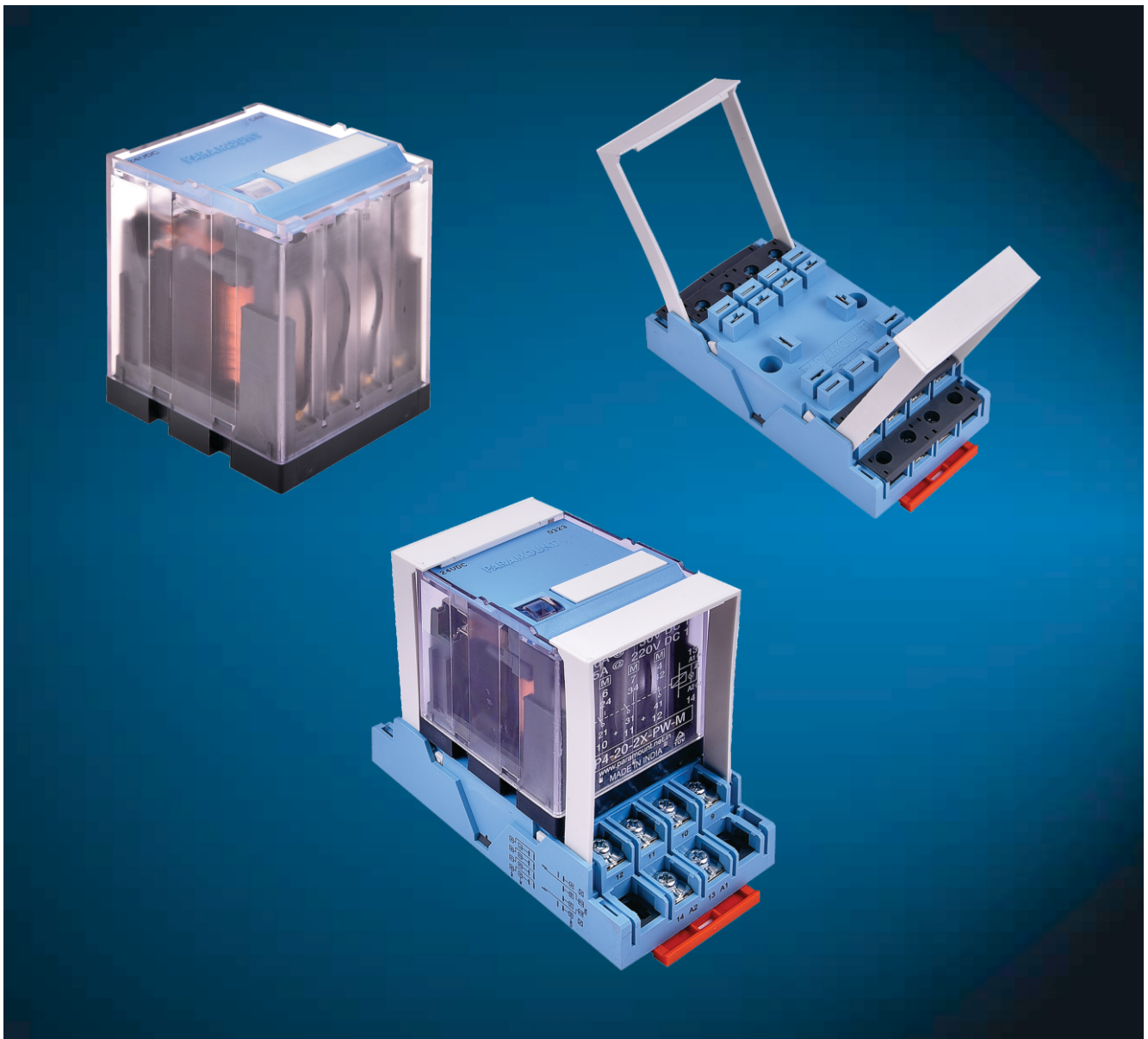
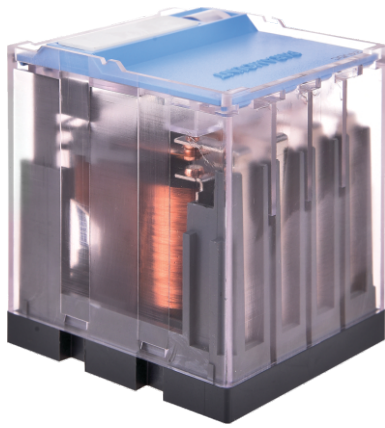


Catalogue

P4 Series



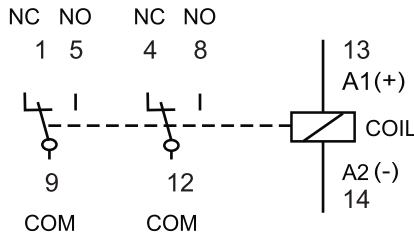


P4-20-2



General Purpose 2 C/O Relay

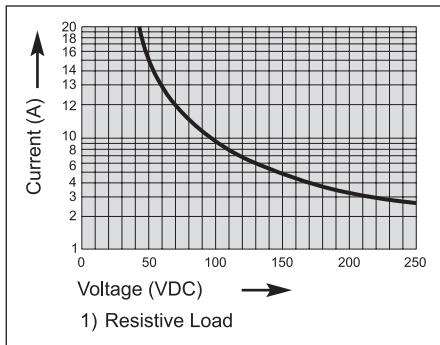
20A @ 250 VAC 1
20A @ 30 VDC 1



Contact Specifications

Materials	: Standard	: AgCuNi
Contact Configuration	: 2 CO	
Nominal Switching Capacity	: 250 VAC 20A AC1	30 VDC 20A DC1
Electric Life Expectancy	: 250 VAC 20A AC1	apprx. 100,000 operations (360 operations / h)
Contact Make and Carry	: 30A for 3 secs / 5A @ 660VAC	
Switching Current Range	: 500mA to 20A	
Max. Switching Power Range	: 8 VA to 5000 VA	
Coil power	: 1.8W	
Contact Resistance	: 20m Ω	

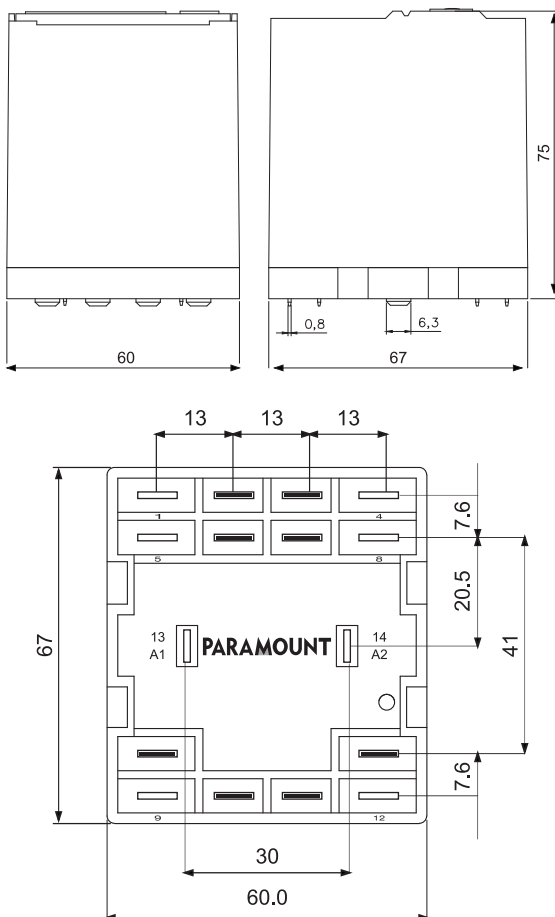
Graph Max. DC Load



Specifications

Mechanical Life Expectancy	: 20 Million operations
Mechanical Switching Frequency	: 20 Hz
Pull-in-time	: 10 ms at DC / 6-14 ms at AC
Release Time	: 2.5 ms at DC / 2-12 ms at AC
Bounce time normally	: 2.0 ms at DC / 3-8 ms at AC
Shock Resistance	: AK : > 10g
Vibration Resistance	: 10-55 Hz, AK : 10g, RK: 3g
Test Voltage, coil/contact (1.2/50 μs)	: > 2.5 KV
Test voltage, open contact	: 2.5 KV
Insulation Resistance	: 100 M ohms Min. @ 500VDC
Weight	: app. 150 g
Insulation Situation	: any
Ambient Temperature	: - 40° C to + 60° C
Protection Standard	: IP 40

Dimensions in mm.



Standard coils for DC & AC (other voltages on enquiry)

Rated Voltage	Pull-in Voltage @ 20° C	Drop Out Voltage	Nominal Current mA	Resistance in Ω at 20° C	Tolerance %
12 VDC	9.00	≥ 1.2	58.50	410	± 10%
24 VDC	18.00	≥ 1.2	58.50	410	± 10%
48 VDC	36.00	≥ 2.4	30.00	1600	± 10%
110 VDC	82.50	≥ 5.5	13.80	8000	± 10%
220 VDC	165.00	≥ 10.0	7.00	32000	± 10%

12 VAC	10.20	≥ 0.6	260.00	10	± 10%
24 VAC	20.40	≥ 1.2	130.00	40	± 10%
48 VAC	40.80	≥ 2.4	60.00	180	± 10%
110 VAC	93.50	≥ 5.5	29.00	950	± 10%
230 VAC	187.00	≥ 11.0	14.00	3900	± 10%

Standard Types

AC : 12, 24, 48, 110, 230 VAC - 50Hz

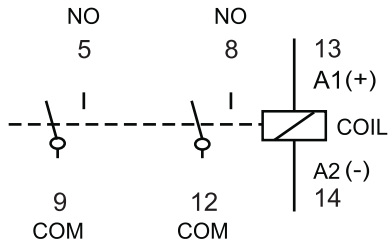
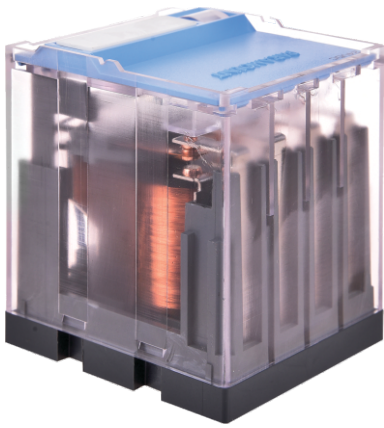
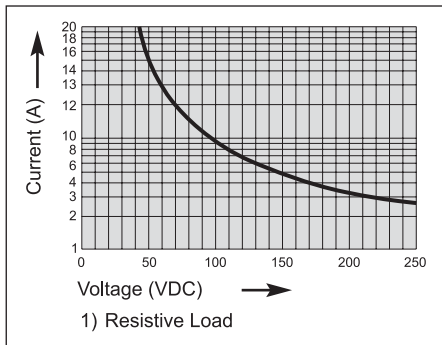
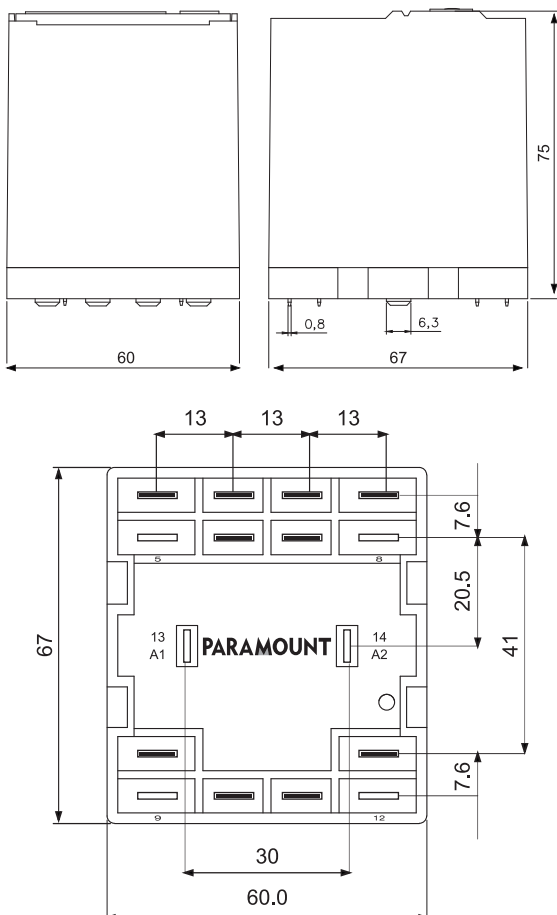
P = LED Indicator across the coil	P4-20-2-P ... VAC
V = Variastor for 110 / 230 VAC	P4-20-2-PV ... VAC
R = RC Circuit for (110 / 230VAC)	P4-20-2-PR ... VAC

DC : 12, 24, 48, 110, 220 VDC

P = LED Indicator across the coil	P4-20-2-P ... VDC
W = Free Wheeling Diode	P4-20-2-PW ... VDC

Suitable Sockets : S4D-2

Approvals


Graph Max. DC Load

Dimensions in mm.


P4-20-2A

General Purpose 2 NO Relay

20A @ 250 VAC 1
20A @ 30 VDC 1

Contact Specifications

Materials	: Standard	: AgCuNi
Contact Configuration	: 2 NO	
Nominal Switching Capacity	: 250 VAC 20A AC1	30 VDC 20A DC1
Electric Life Expectancy	: 250 VAC 20A AC1	apprx. 100,000 operations (360 operations / h)
Contact Make and Carry	: 30A for 3 secs / 5A @ 660VAC	
Switching Current Range	: 500mA to 20A	
Max. Switching Power Range	: 50A for 20ms	
Coil power	:	
Contact Resistance	: 20m Ω	

Specifications

Mechanical Life Expectancy	: 20 Million operations
Mechanical Switching Frequency	: 20 Hz
Pull-in-time	: 10 ms at DC / 6-14 ms at AC
Release Time	: 2,5 ms at DC / 2-12 ms at AC
Bounce time normally	: 2,0 ms at DC / 3-8 ms at AC
Shock Resistance	: AK : > 10g
Vibration Resistance	: 10-55 Hz, AK : 10g, RK: 3g
Test Voltage, coil/contact (1.2/50 μs)	: > 2.5 KV
Test voltage, open contact	: 2.5 KV
Insulation Resistance	: 100 M ohms Min. @ 500VDC
Weight	: app. 150 g
Insulation Situation	: any
Ambient Temperature	: - 40° C to + 60° C
Protection Standard	: IP 40

Standard coils for DC & AC (other voltages on enquiry)

Rated Voltage	Pull-in Voltage @ 20° C	Drop Out Voltage	Nominal Current mA	Resistance in Ω at 20° C	Tolerance %
12 VDC	9.00	≥ 1.2	58.50	410	± 10%
24 VDC	18.00	≥ 1.2	58.50	410	± 10%
48 VDC	36.00	≥ 2.4	30.00	1600	± 10%
110 VDC	82.50	≥ 5.5	13.80	8000	± 10%
220 VDC	165.00	≥ 10.0	7.00	32000	± 10%

12 VAC	10.20	≥ 0.6	260.00	10	± 10%
24 VAC	20.40	≥ 1.2	130.00	40	± 10%
48 VAC	40.80	≥ 2.4	60.00	180	± 10%
110 VAC	93.50	≥ 5.5	29.00	950	± 10%
230 VAC	187.00	≥ 11.0	14.00	3900	± 10%

Standard Types

AC : 12, 24, 48, 110, 230 VAC - 50Hz

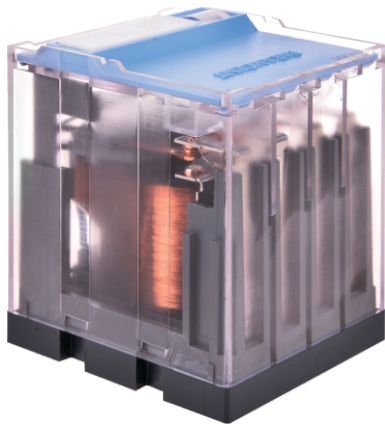
P = LED Indicator across the coil	P4-20-2A-P ... VAC
V = Variastor for 110 / 230 VAC	P4-20-2A-PV ... VAC
R = RC Circuit for (110 / 230VAC)	P4-20-2A-PR ... VAC

DC : 12, 24, 48, 110, 220 VDC

P = LED Indicator across the coil	P4-20-2A-P ... VDC
W = Free Wheeling Diode	P4-20-2A-PW ... VDC

Suitable Sockets : S4D-YA

Approvals

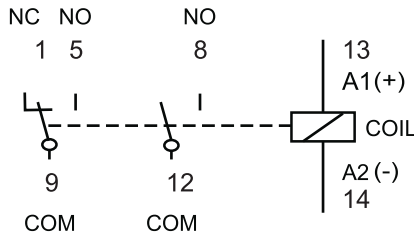


P4-20-X



General Purpose 1NO + 1NC

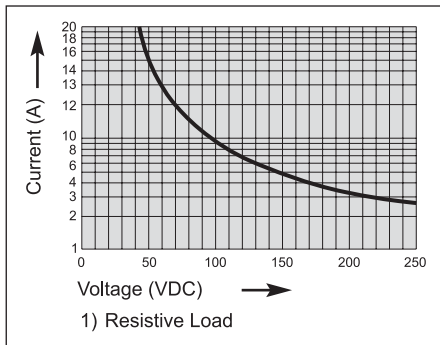
20A @ 250 VAC 1
20A @ 30 VDC 1



Contact Specifications

Materials :	Standard	:	AgCuNi
Contact Configuration	:	1NO + 1NC	
Nominal Switching Capacity	:	250 VAC 20A AC1 30 VDC 20A DC1	
Electric Life Expectancy	:	250 VAC 20A AC1 apprx. 100,000 operations (360 operations / h)	
Contact Make and Carry	:	30A for 3 secs / 5A @ 660VAC	
Switching Current Range	:	500mA to 20A	
Max. Switching Current	:	50A for 20ms	
Coil power	:	8 VA (W) to 5000 VA	
Contact Resistance	:	20m Ω	

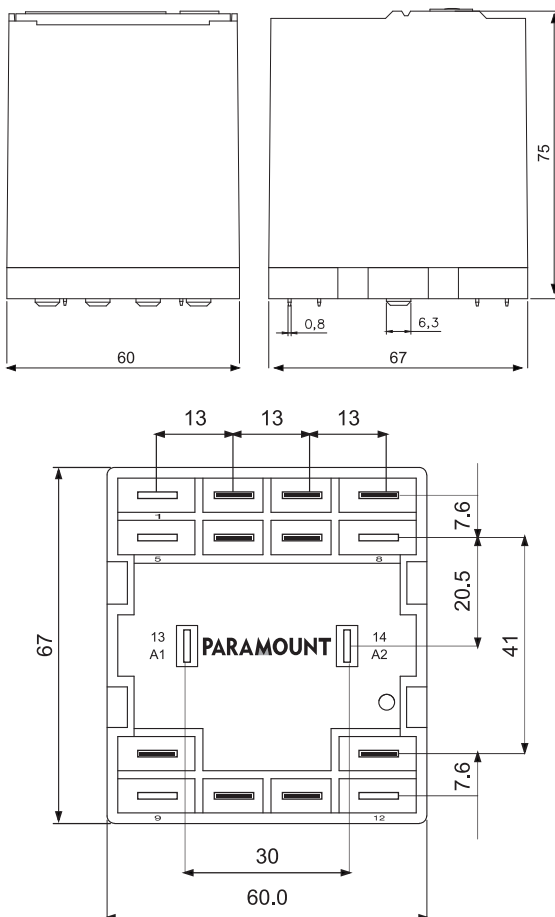
Graph Max. DC Load



Specifications

Mechanical Life Expectancy	:	20 Million operations
Mechanical Switching Frequency	:	20 Hz
Pull-in-time	:	10 ms at DC / 6-14 ms at AC
Release Time	:	2,5 ms at DC / 2-12 ms at AC
Bounce time normally	:	2,0 ms at DC / 3-8 ms at AC
Shock Resistance	:	AK : > 10g
Vibration Resistance	:	10-55 Hz, AK : 10g, RK: 3g
Test Voltage, coil/contact (1.2/50 μs)	:	> 2.5 KV
Test voltage, open contact	:	2.5 KV
Insulation Resistance	:	100 M ohms Min. @ 500VDC
Weight	:	app. 150 g
Insulation Situation	:	any
Ambient Temperature	:	- 40° C to + 60° C
Protection Standard	:	IP 40

Dimensions in mm.



Standard coils for DC & AC (other voltages on enquiry)

Rated Voltage	Pull-in Voltage @ 20° C	Drop Out Voltage	Nominal Current mA	Resistance in Ω at 20° C	Tolerance %
12 VDC	9.00	≥ 1.2	58.50	410	± 10%
24 VDC	18.00	≥ 1.2	58.50	410	± 10%
48 VDC	36.00	≥ 2.4	30.00	1600	± 10%
110 VDC	82.50	≥ 5.5	13.80	8000	± 10%
220 VDC	165.00	≥ 10.0	7.00	32000	± 10%

12 VAC	10.20	≥ 0.6	260.00	10	± 10%
24 VAC	20.40	≥ 1.2	130.00	40	± 10%
48 VAC	40.80	≥ 2.4	60.00	180	± 10%
110 VAC	93.50	≥ 5.5	29.00	950	± 10%
230 VAC	187.00	≥ 11.0	14.00	3900	± 10%

Standard Types

AC : 12, 24, 48, 110, 230 VAC - 50Hz

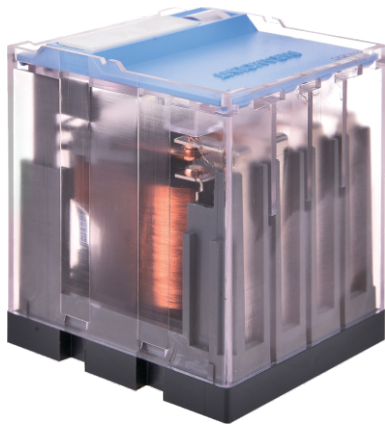
P = LED Indicator across the coil	P4-20-X-P	... VAC
V = Variastor for 110 / 230 VAC	P4-20-X-PV	... VAC
R = RC Circuit for (110 / 230VAC)	P4-20-X-PR	... VAC

DC : 12, 24, 48, 110, 220 VDC

P = LED Indicator across the coil	P4-20-X-P	... VDC
W = Free Wheeling Diode	P4-20-X-PW	... VDC

Suitable Sockets : S4D-X

Approvals

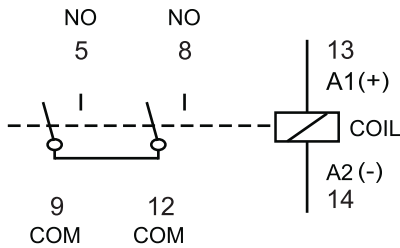


P4-20-Y



General Purpose 1NO Double Break

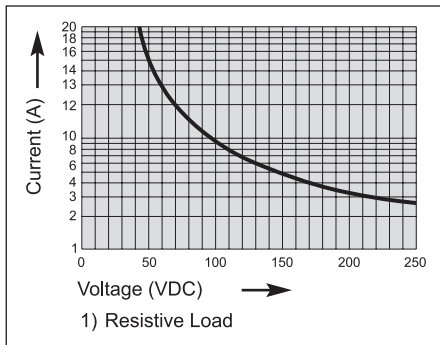
20A @ 250 VAC 1
20A @ 30 VDC 1



Contact Specifications

Materials :	Standard	:	AgCuNi
Contact Configuration	:	1NO Double Break	
Nominal Switching Capacity	:	250 VAC 20A AC1 30 VDC 20A DC1	
Electric Life Expectancy	:	250 VAC 20A AC1 apprx. 100,000 operations (360 operations / h)	
Contact Make and Carry	:	30A for 3 secs / 5A @ 660VAC	
Switching Current Range	:	500mA to 20A	
Max. Switching Current	:	50A for 20ms	
Coil power	:	8 VA (W) to 5000 VA	
Contact Resistance	:	20m Ω	

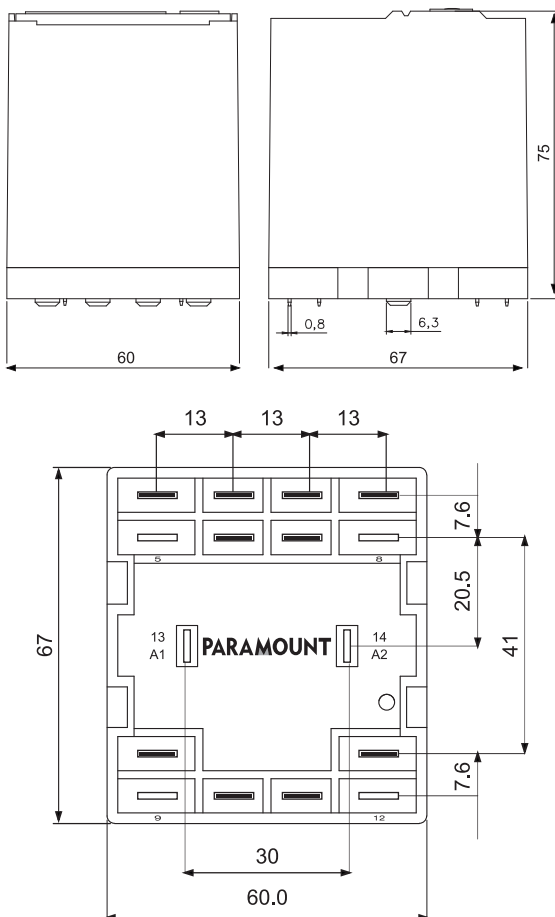
Graph Max. DC Load



Specifications

Mechanical Life Expectancy	:	20 Million operations
Mechanical Switching Frequency	:	20 Hz
Pull-in-time	:	10 ms at DC / 6-14 ms at AC
Release Time	:	2,5 ms at DC / 2-12 ms at AC
Bounce time normally	:	2,0 ms at DC / 3-8 ms at AC
Shock Resistance	:	AK : > 10g
Vibration Resistance	:	10-55 Hz, AK : 10g, RK: 3g
Test Voltage, coil/contact (1.2/50 μs)	:	> 2.5 KV
Test voltage, open contact	:	2.5 KV
Insulation Resistance	:	100 M ohms Min. @ 500VDC
Weight	:	app. 150 g
Insulation Situation	:	any
Ambient Temperature	:	- 40° C to + 60° C
Protection Standard	:	IP 40

Dimensions in mm.



Standard coils for DC & AC (other voltages on enquiry)

Rated Voltage	Pull-in Voltage @ 20° C	Drop Out Voltage	Nominal Current mA	Resistance in Ω at 20° C	Tolerance %
12 VDC	9.00	≥ 1.2	58.50	410	± 10%
24 VDC	18.00	≥ 1.2	58.50	410	± 10%
48 VDC	36.00	≥ 2.4	30.00	1600	± 10%
110 VDC	82.50	≥ 5.5	13.80	8000	± 10%
220 VDC	165.00	≥ 10.0	7.00	32000	± 10%

12 VAC	10.20	≥ 0.6	260.00	10	± 10%
24 VAC	20.40	≥ 1.2	130.00	40	± 10%
48 VAC	40.80	≥ 2.4	60.00	180	± 10%
110 VAC	93.50	≥ 5.5	29.00	950	± 10%
230 VAC	187.00	≥ 11.0	14.00	3900	± 10%

Standard Types

AC : 12, 24, 48, 110, 230 VAC - 50Hz

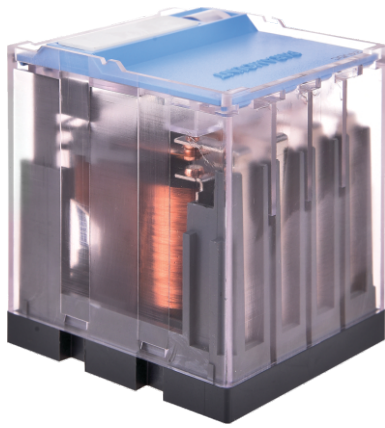
P = LED Indicator across the coil	P4-20-Y-P	... VAC
V = Variastor for 110 / 230 VAC	P4-20-Y-PV	... VAC
R = RC Circuit for (110 / 230VAC)	P4-20-Y-PR	... VAC

DC : 12, 24, 48, 110, 220 VDC

P = LED Indicator across the coil	P4-20-Y-P	... VDC
W = Free Wheeling Diode	P4-20-Y-PW	... VDC

Suitable Sockets : S4D-YA

Approvals



P4-20-2-M



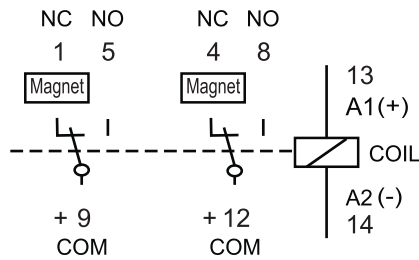
DC Switching 2 CO Relay

20A @ 250 VAC 1
20A @ 30 VDC 1

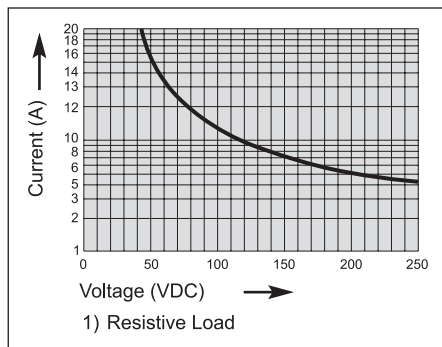
10A @ 220 VDC 1

Contact Specifications

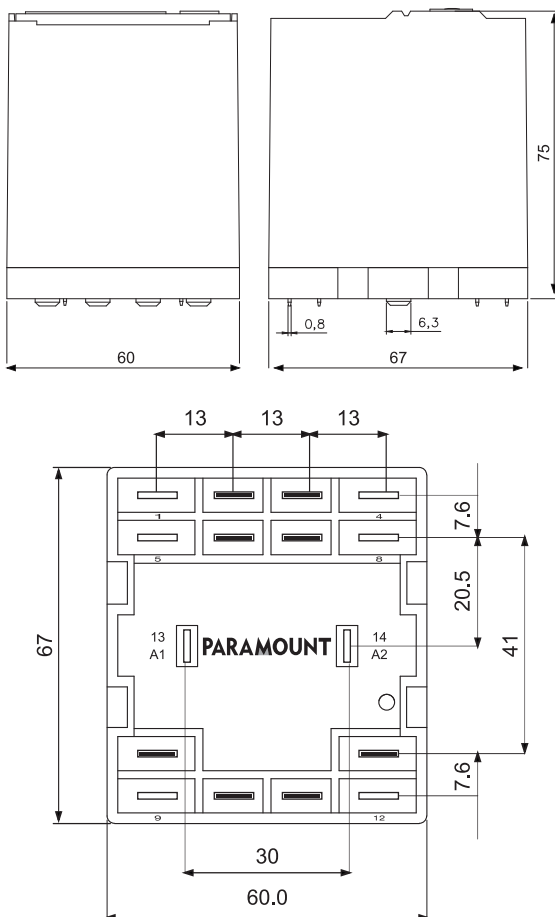
Materials :	Standard	:	AgCuNi
Contact Configuration	:	2 CO	
Nominal Switching Capacity	:	250 VAC 20A AC1 30 VDC 20A DC1	
Electric Life Expectancy	:	250 VAC 20A AC1 apprx. 50,000 operations (360 operations / h)	
Contact Make and Carry	:	30A for 3 secs / 5A @ 660VAC	
Switching Current Range	:	500mA to 20A	
Max. Switching Current	:	50A for 20ms	
Coil power	:	8 VA (W) to 5000 VA	
Contact Resistance	:	20m Ω	



Graph Max. DC Load



Dimensions in mm.



Specifications

Mechanical Life Expectancy	:	20 Million operations
Mechanical Switching Frequency	:	20 Hz
Pull-in-time	:	10 ms at DC / 6-14 ms at AC
Release Time	:	2.5 ms at DC / 2-12 ms at AC
Bounce time normally	:	2.0 ms at DC / 3-8 ms at AC
Shock Resistance	:	AK : > 10g
Vibration Resistance	:	10-55 Hz, AK : 10g, RK: 3g
Test Voltage, coil/contact (1.2/50 μs)	:	> 2.5 KV
Test voltage, open contact	:	2.5 KV
Insulation Resistance	:	100 M ohms Min. @ 500VDC
Weight	:	app. 150 g
Insulation Situation	:	any
Ambient Temperature	:	- 40° C to + 60° C
Protection Standard	:	IP 40

Standard coils for DC & AC (other voltages on enquiry)

Rated Voltage	Pull-in Voltage @ 20° C	Drop Out Voltage	Nominal Current mA	Resistance in Ω at 20° C	Tolerance %
12 VDC	9.00	≥ 1.2	58.50	410	± 10%
24 VDC	18.00	≥ 1.2	58.50	410	± 10%
48 VDC	36.00	≥ 2.4	30.00	1600	± 10%
110 VDC	82.50	≥ 5.5	13.80	8000	± 10%
220 VDC	165.00	≥ 10.0	7.00	32000	± 10%

12 VAC	10.20	≥ 0.6	260.00	10	± 10%
24 VAC	20.40	≥ 1.2	130.00	40	± 10%
48 VAC	40.80	≥ 2.4	60.00	180	± 10%
110 VAC	93.50	≥ 5.5	29.00	950	± 10%
230 VAC	187.00	≥ 11.0	14.00	3900	± 10%

Standard Types

AC : 12, 24, 48, 110, 230 VAC - 50Hz

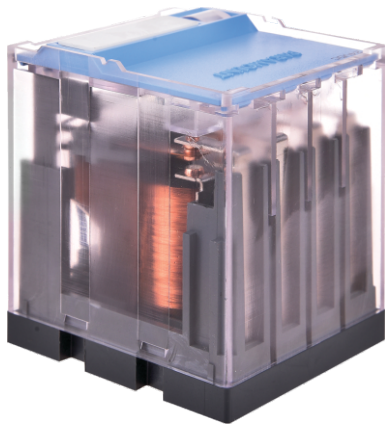
P = LED Indicator across the coil	P4-20-2-M-P ... VAC
V = Variastor for 110 / 230 VAC	P4-20-2-M-PV ... VAC
R = RC Circuit for (110 / 230VAC)	P4-20-2-M-PR ... VAC

DC : 12, 24, 48, 110, 220 VDC

P = LED Indicator across the coil	P4-20-2-M-P ... VDC
W = Free Wheeling Diode	P4-20-2-M-PW ... VDC

Suitable Sockets : S4D-2

Approvals



P4-20-2A-M



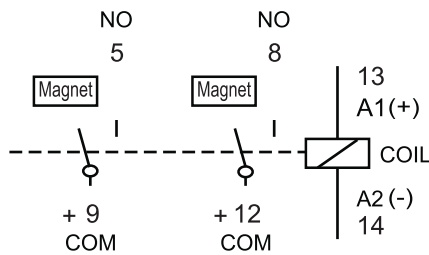
DC Switching 2 NO Relay

20A @ 250 VAC 1
20A @ 30 VDC 1

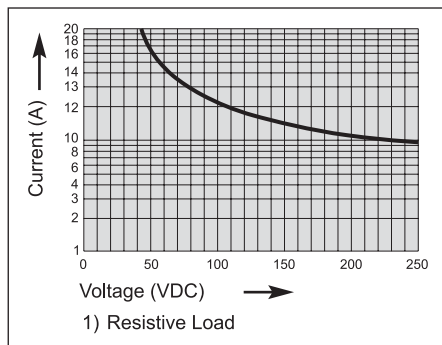
10A @ 220 VDC 1

Contact Specifications

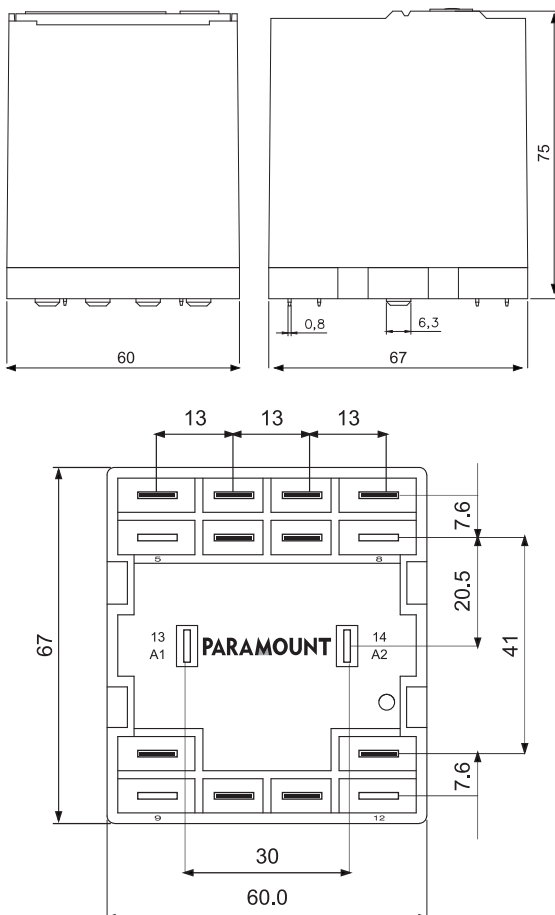
Materials :	Standard	:	AgCuNi
Contact Configuration	:	2 NO	
Nominal Switching Capacity	:	250 VAC 20A AC1 30 VDC 20A DC1	
Electric Life Expectancy	:	250 VAC 20A AC1 apprx. 50,000 operations (360 operations / h)	
Contact Make and Carry	:	30A for 3 secs / 5A @ 660VAC	
Switching Current Range	:	500mA to 20A	
Max. Switching Current	:	50A for 20ms	
Coil power	:	8 VA (W) to 5000 VA	
Contact Resistance	:	20m Ω	



Graph Max. DC Load



Dimensions in mm.



Specifications

Mechanical Life Expectancy	:	20 Million operations
Mechanical Switching Frequency	:	20 Hz
Pull-in-time	:	10 ms at DC / 6-14 ms at AC
Release Time	:	2,5 ms at DC / 2-12 ms at AC
Bounce time normally	:	2,0 ms at DC / 3-8 ms at AC
Shock Resistance	:	AK : > 10g
Vibration Resistance	:	10-55 Hz, AK : 10g, RK: 3g
Test Voltage, coil/contact (1.2/50 μs)	:	> 2.5 KV
Test voltage, open contact	:	2.5 KV
Insulation Resistance	:	100 M ohms Min. @ 500VDC
Weight	:	app. 150 g
Insulation Situation	:	any
Ambient Temperature	:	- 40° C to + 60° C
Protection Standard	:	IP 40

Standard coils for DC & AC (other voltages on enquiry)

Rated Voltage	Pull-in Voltage @ 20° C	Drop Out Voltage	Nominal Current mA	Resistance in Ω at 20° C	Tolerance %
12 VDC	9.00	≥ 1.2	58.50	410	± 10%
24 VDC	18.00	≥ 1.2	58.50	410	± 10%
48 VDC	36.00	≥ 2.4	30.00	1600	± 10%
110 VDC	82.50	≥ 5.5	13.80	8000	± 10%
220 VDC	165.00	≥ 10.0	7.00	32000	± 10%

12 VAC	10.20	≥ 0.6	260.00	10	± 10%
24 VAC	20.40	≥ 1.2	130.00	40	± 10%
48 VAC	40.80	≥ 2.4	60.00	180	± 10%
110 VAC	93.50	≥ 5.5	29.00	950	± 10%
230 VAC	187.00	≥ 11.0	14.00	3900	± 10%

Standard Types

AC : 12, 24, 48, 110, 230 VAC - 50Hz

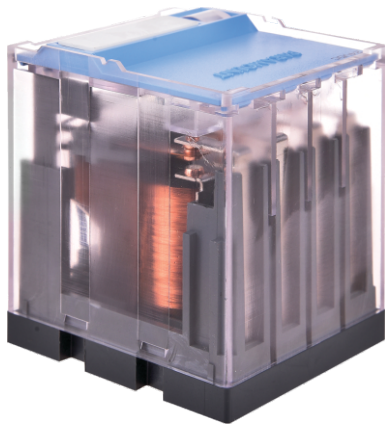
P = LED Indicator across the coil	P4-20-2A-M-P	... VAC
V = Variastor for 110 / 230 VAC	P4-20-2A-M-PV	... VAC
R = RC Circuit for (110 / 230VAC)	P4-20-2A-M-PR	... VAC

DC : 12, 24, 48, 110, 220 VDC

P = LED Indicator across the coil	P4-20-2A-M-P	... VDC
W = Free Wheeling Diode	P4-20-2A-M-PW	... VDC

Suitable Sockets : S4D-YA

Approvals



P4-20-X-M

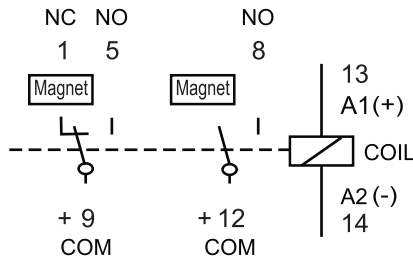
DC Switching 1NO + 1NC Relay

20A @ 250 VAC 1
20A @ 30 VDC 1

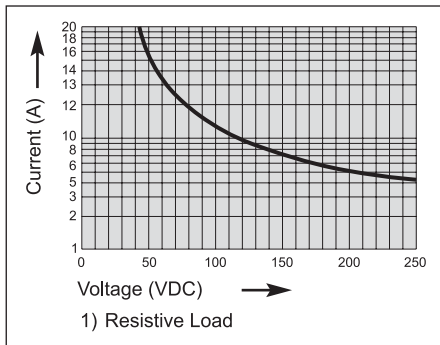
5A @ 220 VDC 1

Contact Specifications

Materials :	Standard	:	AgCuNi
Contact Configuration	:	1NO + 1NC	
Nominal Switching Capacity	:	250 VAC 20A AC1 30 VDC 20A DC1	
Electric Life Expectancy	:	250 VAC 20A AC1 apprx. 50,000 operations (360 operations / h)	
Contact Make and Carry	:	30A for 3 secs / 5A @ 660VAC	
Switching Current Range	:	500mA to 20A	
Max. Switching Current	:	50A for 20ms	
Coil power	:	8 VA (W) to 5000 VA	
Contact Resistance	:	20m Ω	



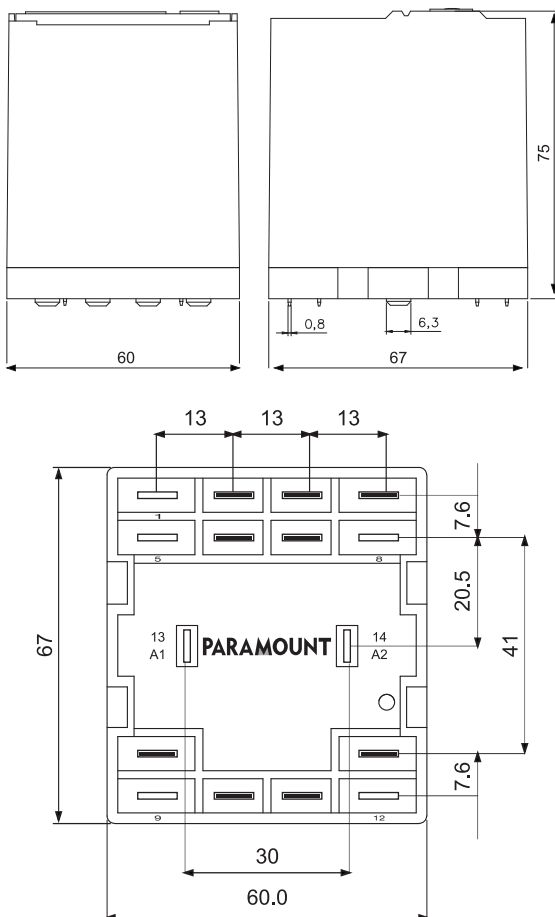
Graph Max. DC Load



Specifications

Mechanical Life Expectancy	:	20 Million operations
Mechanical Switching Frequency	:	20 Hz
Pull-in-time	:	10 ms at DC / 6-14 ms at AC
Release Time	:	2,5 ms at DC / 2-12 ms at AC
Bounce time normally	:	2,0 ms at DC / 3-8 ms at AC
Shock Resistance	:	AK : > 10g
Vibration Resistance	:	10-55 Hz, AK : 10g, RK: 3g
Test Voltage, coil/contact (1.2/50 μs)	:	> 2.5 KV
Test voltage, open contact	:	2.5 KV
Insulation Resistance	:	100 M ohms Min. @ 500VDC
Weight	:	app. 150 g
Insulation Situation	:	any
Ambient Temperature	:	- 40° C to + 60° C
Protection Standard	:	IP 40

Dimensions in mm.



Standard coils for DC & AC (other voltages on enquiry)

Rated Voltage	Pull-in Voltage @ 20° C	Drop Out Voltage	Nominal Current mA	Resistance in Ω at 20° C	Tolerance %
12 VDC	9.00	≥ 1.2	58.50	410	± 10%
24 VDC	18.00	≥ 1.2	58.50	410	± 10%
48 VDC	36.00	≥ 2.4	30.00	1600	± 10%
110 VDC	82.50	≥ 5.5	13.80	8000	± 10%
220 VDC	165.00	≥ 10.0	7.00	32000	± 10%

12 VAC	10.20	≥ 0.6	260.00	10	± 10%
24 VAC	20.40	≥ 1.2	130.00	40	± 10%
48 VAC	40.80	≥ 2.4	60.00	180	± 10%
110 VAC	93.50	≥ 5.5	29.00	950	± 10%
230 VAC	187.00	≥ 11.0	14.00	3900	± 10%

Standard Types

AC : 12, 24, 48, 110, 230 VAC - 50Hz

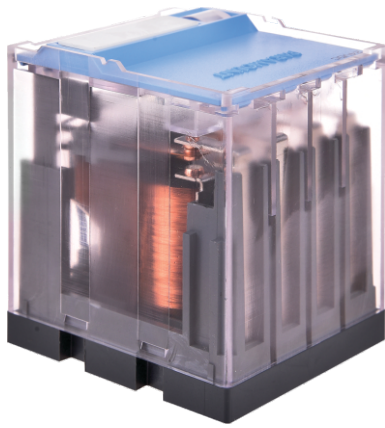
P = LED Indicator across the coil	P4-20-X-M-P	... VAC
V = Variastor for 110 / 230 VAC	P4-20-X-M-PV	... VAC
R = RC Circuit for (110 / 230VAC)	P4-20-X-M-PR	... VAC

DC : 12, 24, 48, 110, 220 VDC

P = LED Indicator across the coil	P4-20-X-M-P	... VDC
W = Free Wheeling Diode	P4-20-X-M-PW	... VDC

Suitable Sockets : S4D-X

Approvals



P4-20-Y-M



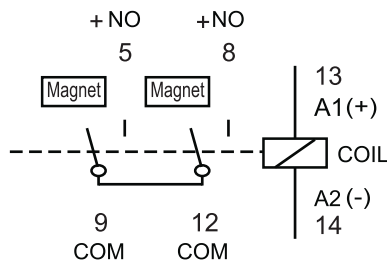
DC Switching 1NO Double Break Relay

20A @ 250 VAC 1
20A @ 30 VDC 1

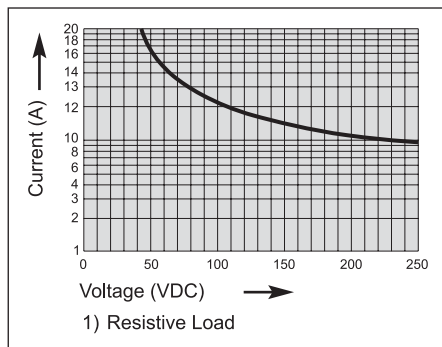
10A @ 220 VDC 1

Contact Specifications

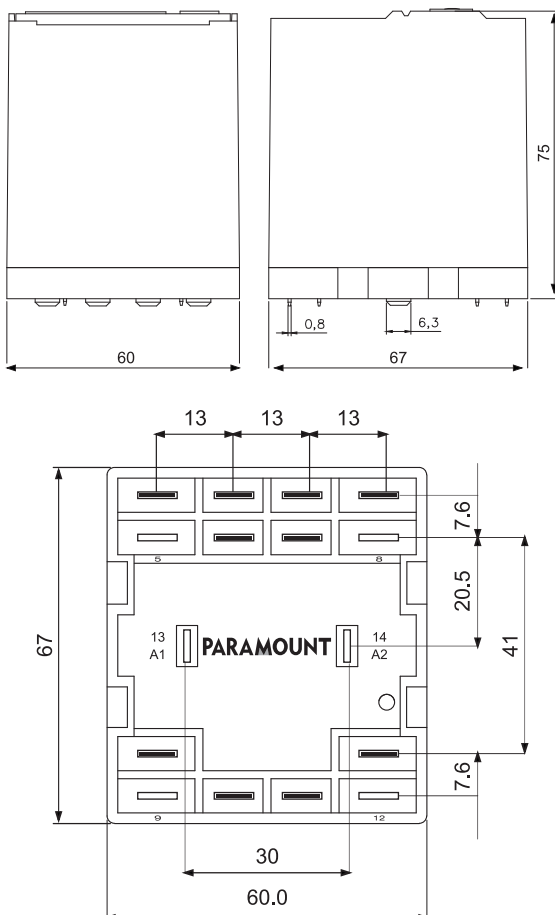
Materials :	Standard	:	AgCuNi
Contact Configuration	:	1NO Double Break	
Nominal Switching Capacity	:	250 VAC 20A AC1 30 VDC 20A DC1	
Electric Life Expectancy	:	250 VAC 20A AC1 apprx. 50,000 operations (360 operations / h)	
Contact Make and Carry	:	30A for 3 secs / 5A @ 660VAC	
Switching Current Range	:	500mA to 20A	
Max. Switching Current	:	50A for 20ms	
Coil power	:	8 VA (W) to 5000 VA	
Contact Resistance	:	20m Ω	



Graph Max. DC Load



Dimensions in mm.



Specifications

Mechanical Life Expectancy	:	20 Million operations
Mechanical Switching Frequency	:	20 Hz
Pull-in-time	:	10 ms at DC / 6-14 ms at AC
Release Time	:	2,5 ms at DC / 2-12 ms at AC
Bounce time normally	:	2,0 ms at DC / 3-8 ms at AC
Shock Resistance	:	AK : > 10g
Vibration Resistance	:	10-55 Hz, AK : 10g, RK: 3g
Test Voltage, coil/contact (1.2/50 μs)	:	> 2.5 KV
Test voltage, open contact	:	2.5 KV
Insulation Resistance	:	100 M ohms Min. @ 500VDC
Weight	:	app. 150 g
Insulation Situation	:	any
Ambient Temperature	:	- 40° C to + 60° C
Protection Standard	:	IP 40

Standard coils for DC & AC (other voltages on enquiry)

Rated Voltage	Pull-in Voltage @ 20° C	Drop Out Voltage	Nominal Current mA	Resistance in Ω at 20° C	Tolerance %
12 VDC	9.00	≥ 1.2	58.50	410	± 10%
24 VDC	18.00	≥ 1.2	58.50	410	± 10%
48 VDC	36.00	≥ 2.4	30.00	1600	± 10%
110 VDC	82.50	≥ 5.5	13.80	8000	± 10%
220 VDC	165.00	≥ 10.0	7.00	32000	± 10%

12 VAC	10.20	≥ 0.6	260.00	10	± 10%
24 VAC	20.40	≥ 1.2	130.00	40	± 10%
48 VAC	40.80	≥ 2.4	60.00	180	± 10%
110 VAC	93.50	≥ 5.5	29.00	950	± 10%
230 VAC	187.00	≥ 11.0	14.00	3900	± 10%

Standard Types

AC : 12, 24, 48, 110, 230 VAC - 50Hz

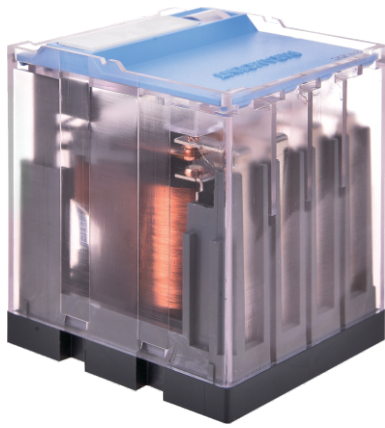
P = LED Indicator across the coil	P4-20-Y-M-P ... VAC
V = Variastor for 110 / 230 VAC	P4-20-Y-M-PV ... VAC
R = RC Circuit for (110 / 230VAC)	P4-20-Y-M-PR ... VAC

DC : 12, 24, 48, 110, 220 VDC

P = LED Indicator across the coil	P4-20-Y-M-P ... VDC
W = Free Wheeling Diode	P4-20-Y-M-PW ... VDC

Suitable Sockets : S4D-YA

Approvals

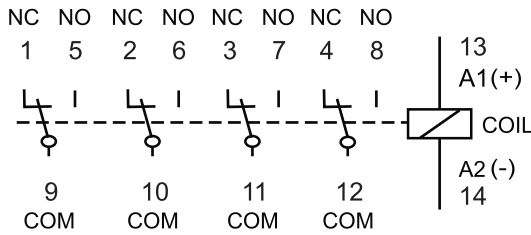


P4-10-4



General Purpose 4 CO Relay

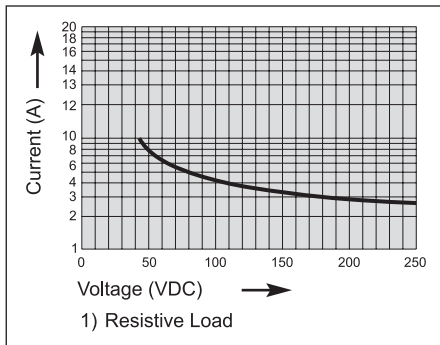
10A @ 250 VAC 1
10A @ 30 VDC 1



Contact Specifications

Materials	: Standard	: AgCuNi
Contact Configuration	: 4 CO	
Nominal Switching Capacity	: 250 VAC 10A AC1	30 VDC 10A DC1
Electric Life Expectancy	: 250 VAC 10A AC1	apprx. 100,000 operations (360 operations / h)
Contact Make and Carry	: 30A for 3 secs / 5A @ 660VAC	
Switching Current Range	: 500mA to 10A	
Max. Switching Current	: 50A for 20ms	
Coil power	: 8 VA (W) to 5000 VA	
Contact Resistance	: 20m Ω	

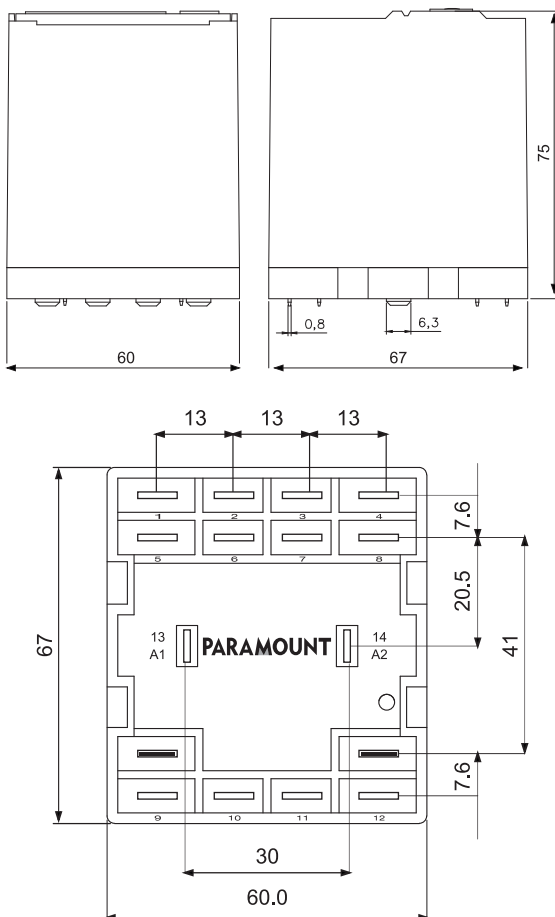
Graph Max. DC Load



Specifications

Mechanical Life Expectancy	: 20 Million operations
Mechanical Switching Frequency	: 20 Hz
Pull-in-time	: 10 ms at DC / 6-14 ms at AC
Release Time	: 2,5 ms at DC / 2-12 ms at AC
Bounce time normally	: 2,0 ms at DC / 3-8 ms at AC
Shock Resistance	: AK : > 10g
Vibration Resistance	: 10-55 Hz, AK : 10g, RK: 3g
Test Voltage, coil/contact (1.2/50 μs)	: > 2.5 KV
Test voltage, open contact	: 2.5 KV
Insulation Resistance	: 100 M ohms Min. @ 500VDC
Weight	: app. 150 g
Insulation Situation	: any
Ambient Temperature	: - 40° C to + 60° C
Protection Standard	: IP 40

Dimensions in mm.



Standard coils for DC & AC (other voltages on enquiry)

Rated Voltage	Pull-in Voltage @ 20° C	Drop Out Voltage	Nominal Current mA	Resistance in Ω at 20° C	Tolerance %
12 VDC	9.00	≥ 1.2	58.50	410	± 10%
24 VDC	18.00	≥ 1.2	58.50	410	± 10%
48 VDC	36.00	≥ 2.4	30.00	1600	± 10%
110 VDC	82.50	≥ 5.5	13.80	8000	± 10%
220 VDC	165.00	≥ 10.0	7.00	32000	± 10%

12 VAC	10.20	≥ 0.6	260.00	10	± 10%
24 VAC	20.40	≥ 1.2	130.00	40	± 10%
48 VAC	40.80	≥ 2.4	60.00	180	± 10%
110 VAC	93.50	≥ 5.5	29.00	950	± 10%
230 VAC	187.00	≥ 11.0	14.00	3900	± 10%

Standard Types

AC : 12, 24, 48, 110, 230 VAC - 50Hz

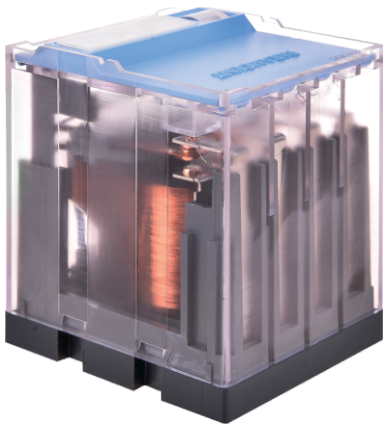
P = LED Indicator across the coil	P4-10-4-P ... VAC
V = Variastor for 110 / 230 VAC	P4-10-4-PV ... VAC
R = RC Circuit for (110 / 230VAC)	P4-10-4-PR ... VAC

DC : 12, 24, 48, 110, 220 VDC

P = LED Indicator across the coil	P4-10-4-P ... VDC
W = Free Wheeling Diode	P4-10-4-PW ... VDC

Suitable Sockets : S4D

Approvals

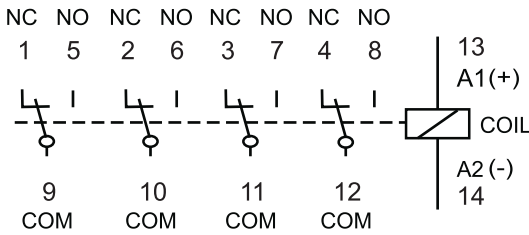


P4-20-4

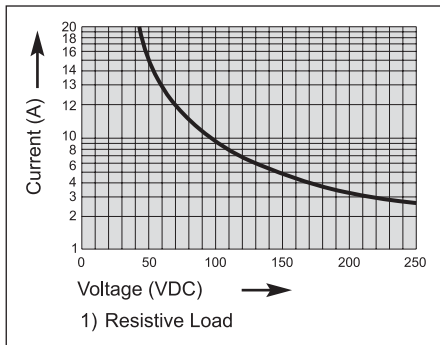


General Purpose 4 CO Relay

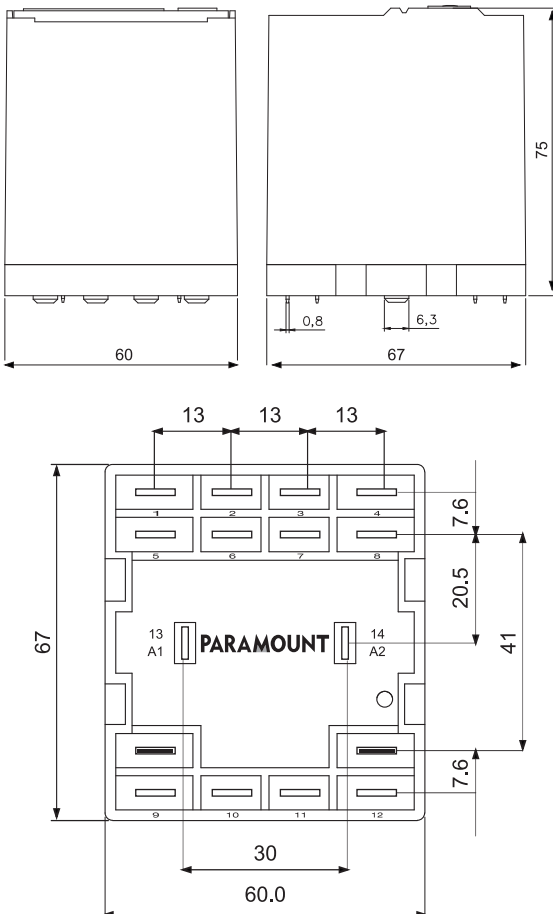
20A @ 250 VAC 1
20A @ 30 VDC 1



Graph Max. DC Load



Dimensions in mm.



Contact Specifications

Materials	: Standard	: AgCuNi
Contact Configuration	: 4 CO	
Nominal Switching Capacity	: 250 VAC 20A AC1	30 VDC 20A DC1
Electric Life Expectancy	: 250 VAC 20A AC1	apprx. 100,000 operations (360 operations / h)
Contact Make and Carry	: 30A for 3 secs / 5A @ 660VAC	
Switching Current Range	: 500mA to 20A	
Max. Switching Current	: 50A for 20ms	
Coil power	: 8 VA (W) to 5000 VA	
Contact Resistance	: 20m Ω	

Specifications

Mechanical Life Expectancy	: 20 Million operations
Mechanical Switching Frequency	: 20 Hz
Pull-in-time	: 10 ms at DC / 6-14 ms at AC
Release Time	: 2,5 ms at DC / 2-12 ms at AC
Bounce time normally	: 2,0 ms at DC / 3-8 ms at AC
Shock Resistance	: AK : > 10g
Vibration Resistance	: 10-55 Hz, AK : 10g, RK: 3g
Test Voltage, coil/contact (1.2/50 μs)	: > 2.5 KV
Test voltage, open contact	: 2.5 KV
Insulation Resistance	: 100 M ohms Min. @ 500VDC
Weight	: app. 150 g
Insulation Situation	: any
Ambient Temperature	: - 40° C to + 60° C
Protection Standard	: IP 40

Standard coils for DC & AC (other voltages on enquiry)

Rated Voltage	Pull-in Voltage @ 20° C	Drop Out Voltage	Nominal Current mA	Resistance in Ω at 20° C	Tolerance %
12 VDC	9.00	≥ 1.2	58.50	410	± 10%
24 VDC	18.00	≥ 1.2	58.50	410	± 10%
48 VDC	36.00	≥ 2.4	30.00	1600	± 10%
110 VDC	82.50	≥ 5.5	13.80	8000	± 10%
220 VDC	165.00	≥ 10.0	7.00	32000	± 10%

12 VAC	10.20	≥ 0.6	260.00	10	± 10%
24 VAC	20.40	≥ 1.2	130.00	40	± 10%
48 VAC	40.80	≥ 2.4	60.00	180	± 10%
110 VAC	93.50	≥ 5.5	29.00	950	± 10%
230 VAC	187.00	≥ 11.0	14.00	3900	± 10%

Standard Types

AC : 12, 24, 48, 110, 230 VAC - 50Hz

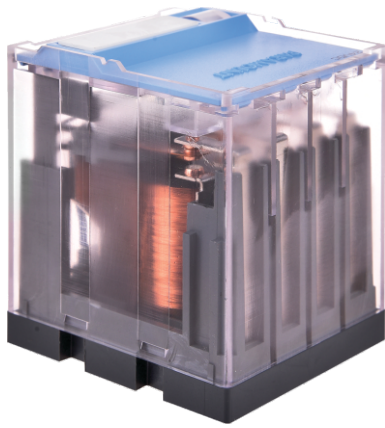
P = LED Indicator across the coil	P4-20-4-P ... VAC
V = Variastor for 110 / 230 VAC	P4-20-4-PV ... VAC
R = RC Circuit for (110 / 230VAC)	P4-20-4-PR ... VAC

DC : 12, 24, 48, 110, 220 VDC

P = LED Indicator across the coil	P4-20-4-P ... VDC
W = Free Wheeling Diode	P4-20-4-PW ... VDC

Suitable Sockets : S4D

Approvals

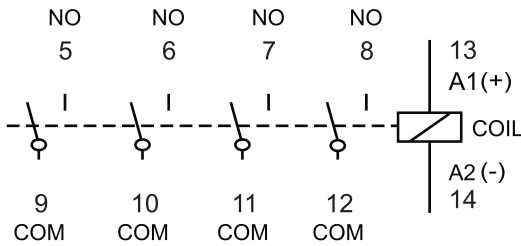


P4-20-4A



General Purpose 4 NO Relay

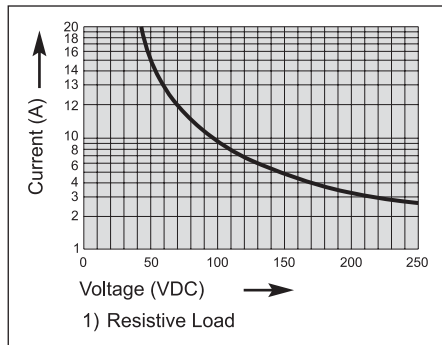
20A @ 250 VAC 1
20A @ 30 VDC 1



Contact Specifications

Materials	: Standard	: AgCuNi
Contact Configuration	: 4 NO	
Nominal Switching Capacity	: 250 VAC 20A AC1	30 VDC 20A DC1
Electric Life Expectancy	: 250 VAC 20A AC1	apprx. 100,000 operations (360 operations / h)
Contact Make and Carry	: 30A for 3 secs / 5A @ 660VAC	
Switching Current Range	: 500mA to 20A	
Max. Switching Current	: 50A for 20ms	
Coil power	: 8 VA (W) to 5000 VA	
Contact Resistance	: 20m Ω	

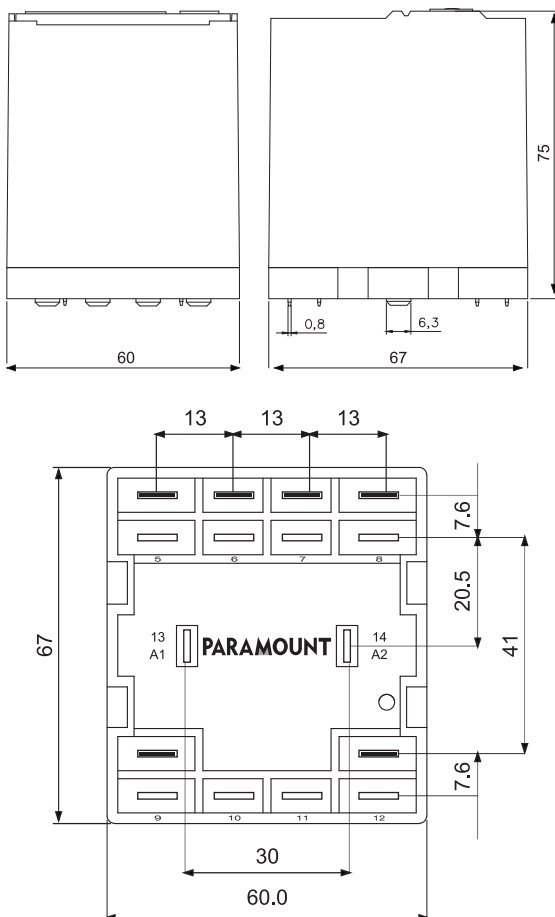
Graph Max. DC Load



Specifications

Mechanical Life Expectancy	: 20 Million operations
Mechanical Switching Frequency	: 20 Hz
Pull-in-time	: 10 ms at DC / 6-14 ms at AC
Release Time	: 2,5 ms at DC / 2-12 ms at AC
Bounce time normally	: 2,0 ms at DC / 3-8 ms at AC
Shock Resistance	: AK : > 10g
Vibration Resistance	: 10-55 Hz, AK : 10g, RK: 3g
Test Voltage, coil/contact (1.2/50 μs)	: > 2.5 KV
Test voltage, open contact	: 2.5 KV
Insulation Resistance	: 100 M ohms Min. @ 500VDC
Weight	: app. 150 g
Insulation Situation	: any
Ambient Temperature	: - 40° C to + 60° C
Protection Standard	: IP 40

Dimensions in mm.



Standard coils for DC & AC (other voltages on enquiry)

Rated Voltage	Pull-in Voltage @ 20° C	Drop Out Voltage	Nominal Current mA	Resistance in Ω at 20° C	Tolerance %
12 VDC	9.00	≥ 1.2	58.50	410	± 10%
24 VDC	18.00	≥ 1.2	58.50	410	± 10%
48 VDC	36.00	≥ 2.4	30.00	1600	± 10%
110 VDC	82.50	≥ 5.5	13.80	8000	± 10%
220 VDC	165.00	≥ 10.0	7.00	32000	± 10%

12 VAC	10.20	≥ 0.6	260.00	10	± 10%
24 VAC	20.40	≥ 1.2	130.00	40	± 10%
48 VAC	40.80	≥ 2.4	60.00	180	± 10%
110 VAC	93.50	≥ 5.5	29.00	950	± 10%
230 VAC	187.00	≥ 11.0	14.00	3900	± 10%

Standard Types

AC : 12, 24, 48, 110, 230 VAC - 50Hz

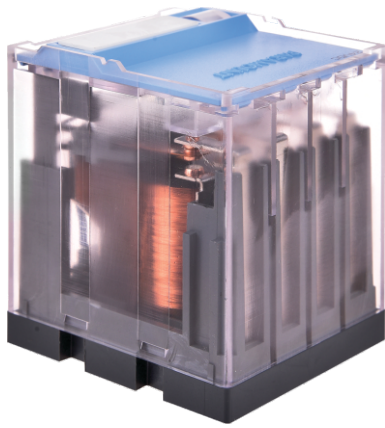
P = LED Indicator across the coil	P4-20-4A-P ... VAC
V = Variastor for 110 / 230 VAC	P4-20-4A-PV ... VAC
R = RC Circuit for (110 / 230VAC)	P4-20-4A-PR ... VAC

DC : 12, 24, 48, 110, 220 VDC

P = LED Indicator across the coil	P4-20-4A-P ... VDC
W = Free Wheeling Diode	P4-20-4A-PW ... VDC

Suitable Sockets : S4D-2YA

Approvals

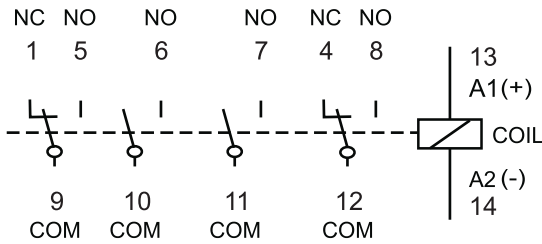


P4-20-2X



General Purpose 2NO + 2NC

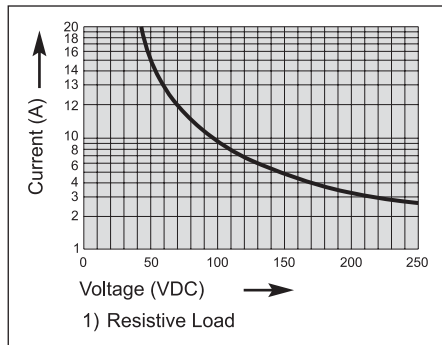
20A @ 250 VAC 1
20A @ 30 VDC 1



Contact Specifications

Materials	: Standard	: AgCuNi
Contact Configuration	: 2NO + 2NC	
Nominal Switching Capacity	: 250 VAC 20A AC1	30 VDC 20A DC1
Electric Life Expectancy	: 250 VAC 20A AC1	apprx. 100,000 operations (360 operations / h)
Contact Make and Carry	: 30A for 3 secs / 5A @ 660VAC	
Switching Current Range	: 500mA to 20A	
Max. Switching Current	: 50A for 20ms	
Coil power	: 8 VA (W) to 5000 VA	
Contact Resistance	: 20m Ω	

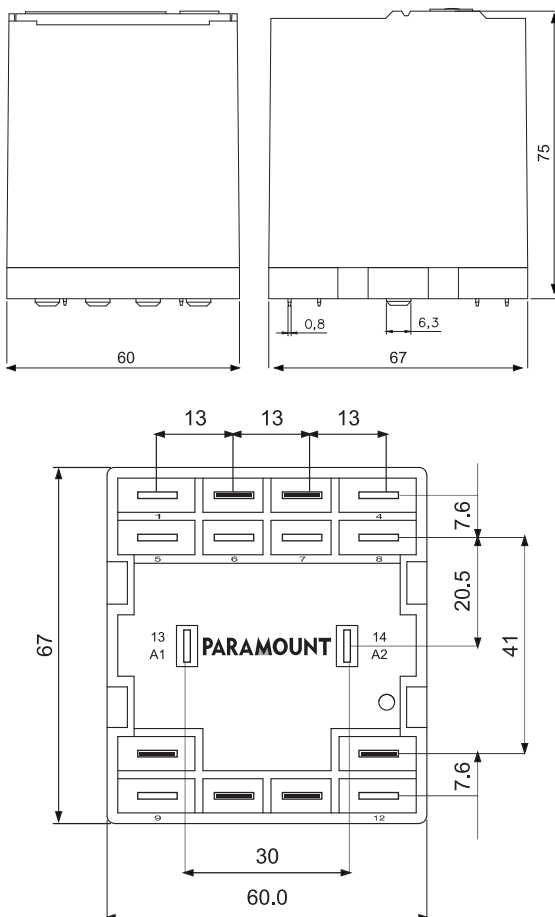
Graph Max. DC Load



Specifications

Mechanical Life Expectancy	: 20 Million operations
Mechanical Switching Frequency	: 20 Hz
Pull-in-time	: 10 ms at DC / 6-14 ms at AC
Release Time	: 2,5 ms at DC / 2-12 ms at AC
Bounce time normally	: 2,0 ms at DC / 3-8 ms at AC
Shock Resistance	: AK : > 10g
Vibration Resistance	: 10-55 Hz, AK : 10g, RK: 3g
Test Voltage, coil/contact (1.2/50 μs)	: > 2.5 KV
Test voltage, open contact	: 2.5 KV
Insulation Resistance	: 100 M ohms Min. @ 500VDC
Weight	: app. 150 g
Insulation Situation	: any
Ambient Temperature	: - 40° C to + 60° C
Protection Standard	: IP 40

Dimensions in mm.



Standard coils for DC & AC (other voltages on enquiry)

Rated Voltage	Pull-in Voltage @ 20° C	Drop Out Voltage	Nominal Current mA	Resistance in Ω at 20° C	Tolerance %
12 VDC	9.00	≥ 1.2	58.50	410	± 10%
24 VDC	18.00	≥ 1.2	58.50	410	± 10%
48 VDC	36.00	≥ 2.4	30.00	1600	± 10%
110 VDC	82.50	≥ 5.5	13.80	8000	± 10%
220 VDC	165.00	≥ 10.0	7.00	32000	± 10%

12 VAC	10.20	≥ 0.6	260.00	10	± 10%
24 VAC	20.40	≥ 1.2	130.00	40	± 10%
48 VAC	40.80	≥ 2.4	60.00	180	± 10%
110 VAC	93.50	≥ 5.5	29.00	950	± 10%
230 VAC	187.00	≥ 11.0	14.00	3900	± 10%

Standard Types

AC : 12, 24, 48, 110, 230 VAC - 50Hz

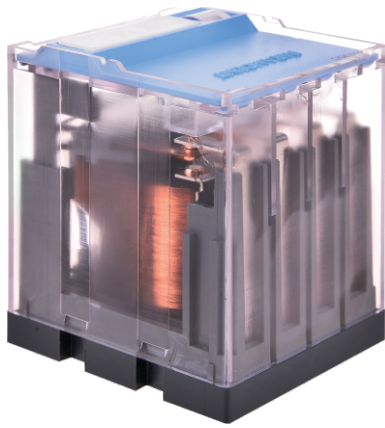
P = LED Indicator across the coil	P4-20-2X-P ... VAC
V = Variastor for 110 / 230 VAC	P4-20-2X-PV ... VAC
R = RC Circuit for (110 / 230VAC)	P4-20-2X-PR ... VAC

DC : 12, 24, 48, 110, 220 VDC

P = LED Indicator across the coil	P4-20-2X-P ... VDC
W = Free Wheeling Diode	P4-20-2X-PW ... VDC

Suitable Sockets : S4D-2X

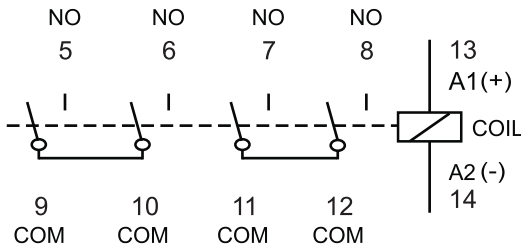
Approvals



P4-20-2Y

General Purpose 2NO Double Break

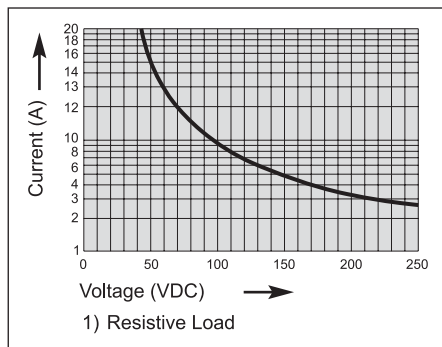
20A @ 250 VAC 1
20A @ 30 VDC 1



Contact Specifications

Materials :	Standard	:	AgCuNi
Contact Configuration	:	2NO Double Break	
Nominal Switching Capacity	:	250 VAC 20A AC1 30 VDC 20A DC1	
Electric Life Expectancy	:	250 VAC 20A AC1 apprx. 100,000 operations (360 operations / h)	
Contact Make and Carry	:	30A for 3 secs / 5A @ 660VAC	
Switching Current Range	:	500mA to 20A	
Max. Switching Current	:	50A for 20ms	
Coil power	:	8 VA (W) to 5000 VA	
Contact Resistance	:	20m Ω	

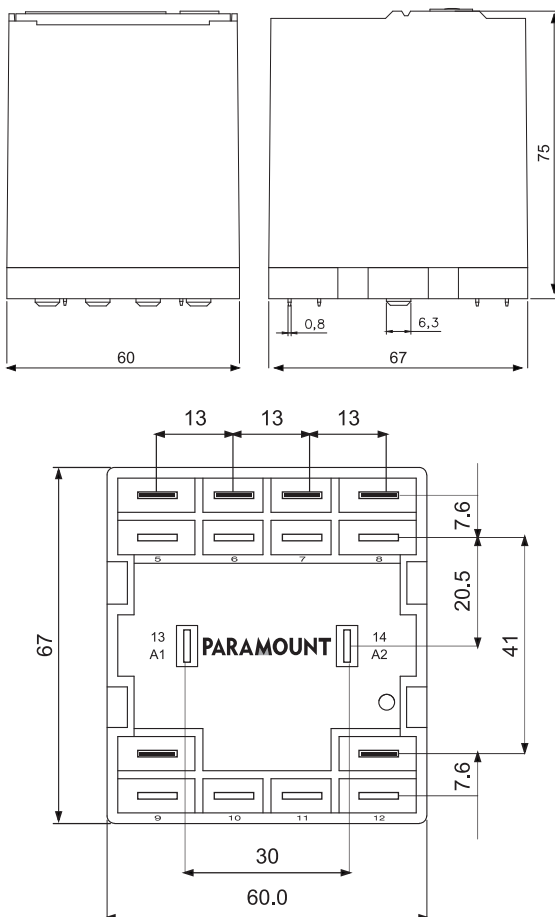
Graph Max. DC Load



Specifications

Mechanical Life Expectancy	:	20 Million operations
Mechanical Switching Frequency	:	20 Hz
Pull-in-time	:	10 ms at DC / 6-14 ms at AC
Release Time	:	2,5 ms at DC / 2-12 ms at AC
Bounce time normally	:	2,0 ms at DC / 3-8 ms at AC
Shock Resistance	:	AK : > 10g
Vibration Resistance	:	10-55 Hz, AK : 10g, RK: 3g
Test Voltage, coil/contact (1.2/50 μs)	:	> 2.5 KV
Test voltage, open contact	:	2.5 KV
Insulation Resistance	:	100 M ohms Min. @ 500VDC
Weight	:	app. 150 g
Insulation Situation	:	any
Ambient Temperature	:	- 40° C to + 60° C
Protection Standard	:	IP 40

Dimensions in mm.



Standard coils for DC & AC (other voltages on enquiry)

Rated Voltage	Pull-in Voltage @ 20° C	Drop Out Voltage	Nominal Current mA	Resistance in Ω at 20° C	Tolerance %
12 VDC	9.00	≥ 1.2	58.50	410	± 10%
24 VDC	18.00	≥ 1.2	58.50	410	± 10%
48 VDC	36.00	≥ 2.4	30.00	1600	± 10%
110 VDC	82.50	≥ 5.5	13.80	8000	± 10%
220 VDC	165.00	≥ 10.0	7.00	32000	± 10%

12 VAC	10.20	≥ 0.6	260.00	10	± 10%
24 VAC	20.40	≥ 1.2	130.00	40	± 10%
48 VAC	40.80	≥ 2.4	60.00	180	± 10%
110 VAC	93.50	≥ 5.5	29.00	950	± 10%
230 VAC	187.00	≥ 11.0	14.00	3900	± 10%

Standard Types

AC : 12, 24, 48, 110, 230 VAC - 50Hz

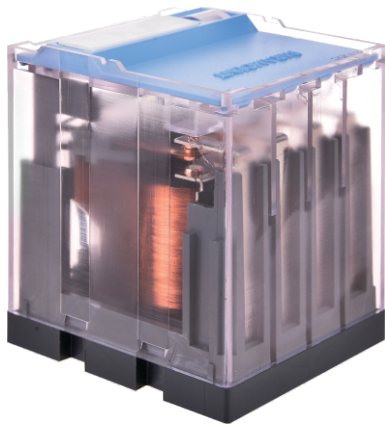
P = LED Indicator across the coil	P4-20-2Y-P	... VAC
V = Variastor for 110 / 230 VAC	P4-20-2Y-PV	... VAC
R = RC Circuit for (110 / 230VAC)	P4-20-2Y-PR	... VAC

DC : 12, 24, 48, 110, 220 VDC

P = LED Indicator across the coil	P4-20-2Y-P	... VDC
W = Free Wheeling Diode	P4-20-2Y-PW	... VDC

Suitable Sockets : S4D-2YA

Approvals



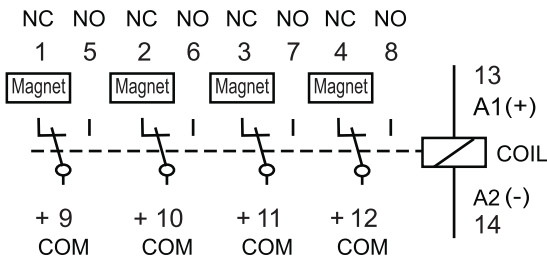
P4-20-4-M



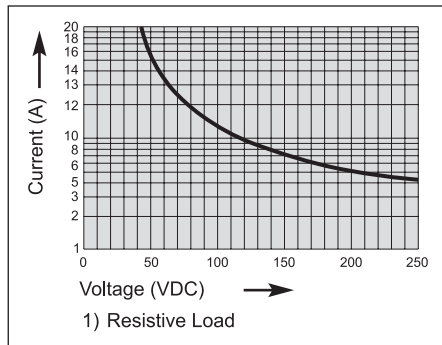
DC Switching 4 CO Relay

20A @ 250 VAC 1
20A @ 30 VDC 1

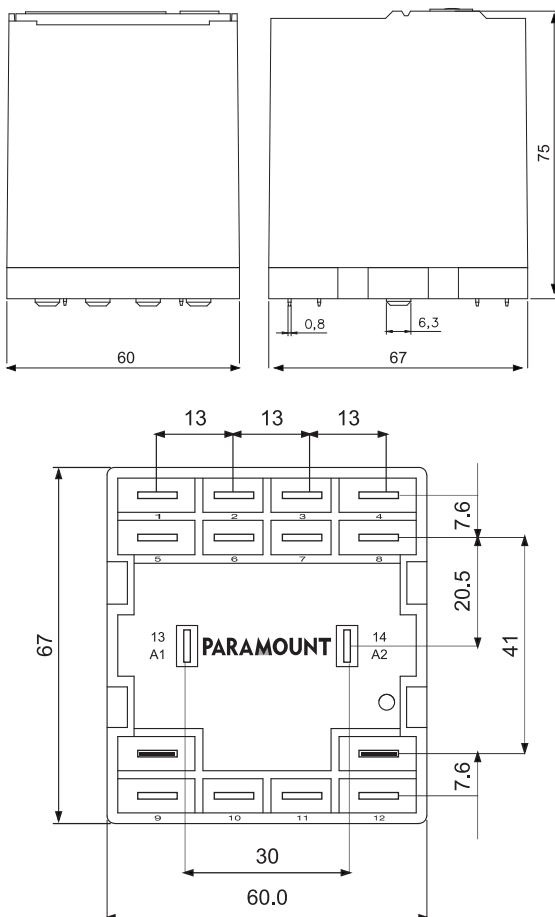
5A @ 220 VDC 1



Graph Max. DC Load



Dimensions in mm.



Contact Specifications

Materials	: Standard	: AgCuNi
Contact Configuration	: 4 CO	
Nominal Switching Capacity	: 250 VAC 20A AC1	30 VDC 20A DC1
Electric Life Expectancy	: 250 VAC 20A AC1	apprx. 50,000 operations (360 operations / h)
Contact Make and Carry	: 30A for 3 secs / 5A @ 660VAC	
Switching Current Range	: 500mA to 20A	
Max. Switching Current	: 50A for 20ms	
Coil power	: 8 VA (W) to 5000 VA	
Contact Resistance	: 20m Ω	

Specifications

Mechanical Life Expectancy	: 20 Million operations
Mechanical Switching Frequency	: 20 Hz
Pull-in-time	: 10 ms at DC / 6-14 ms at AC
Release Time	: 2.5 ms at DC / 2-12 ms at AC
Bounce time normally	: 2.0 ms at DC / 3-8 ms at AC
Shock Resistance	: AK : > 10g
Vibration Resistance	: 10-55 Hz, AK : 10g, RK: 3g
Test Voltage, coil/contact (1.2/50 μs)	: > 2.5 KV
Test voltage, open contact	: 2.5 KV
Insulation Resistance	: 100 M ohms Min. @ 500VDC
Weight	: app. 150 g
Insulation Situation	: any
Ambient Temperature	: - 40° C to + 60° C
Protection Standard	: IP 40

Standard coils for DC & AC (other voltages on enquiry)

Rated Voltage	Pull-in Voltage @ 20° C	Drop Out Voltage	Nominal Current mA	Resistance in Ω at 20° C	Tolerance %
12 VDC	9.00	≥ 1.2	58.50	410	± 10%
24 VDC	18.00	≥ 1.2	58.50	410	± 10%
48 VDC	36.00	≥ 2.4	30.00	1600	± 10%
110 VDC	82.50	≥ 5.5	13.80	8000	± 10%
220 VDC	165.00	≥ 10.0	7.00	32000	± 10%

12 VAC	10.20	≥ 0.6	260.00	10	± 10%
24 VAC	20.40	≥ 1.2	130.00	40	± 10%
48 VAC	40.80	≥ 2.4	60.00	180	± 10%
110 VAC	93.50	≥ 5.5	29.00	950	± 10%
230 VAC	187.00	≥ 11.0	14.00	3900	± 10%

Standard Types

AC : 12, 24, 48, 110, 230 VAC - 50Hz

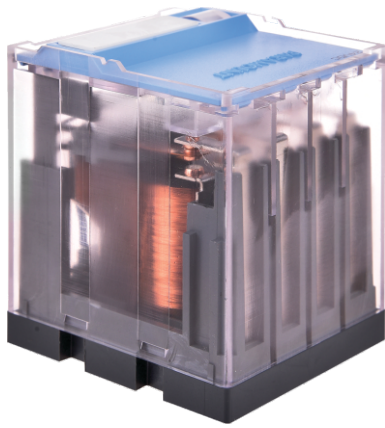
P = LED Indicator across the coil	P4-20-4-M-P ... VAC
V = Variastor for 110 / 230 VAC	P4-20-4-M-PV ... VAC
R = RC Circuit for (110 / 230VAC)	P4-20-4-M-PR ... VAC

DC : 12, 24, 48, 110, 220 VDC

P = LED Indicator across the coil	P4-20-4-M-P ... VDC
W = Free Wheeling Diode	P4-20-4-M-PW ... VDC

Suitable Sockets : S4D

Approvals



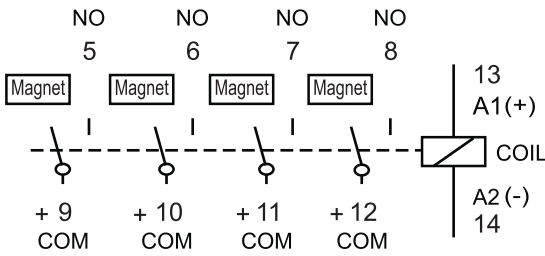
P4-20-4A-M



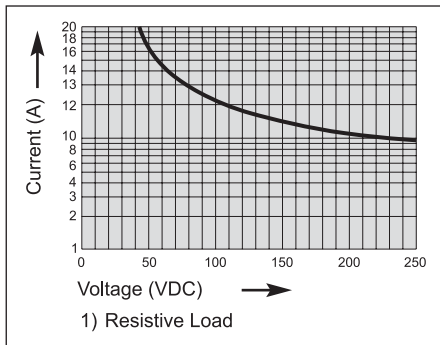
DC Switching 4 NO Relay

20A @ 250 VAC 1
20A @ 30 VDC 1

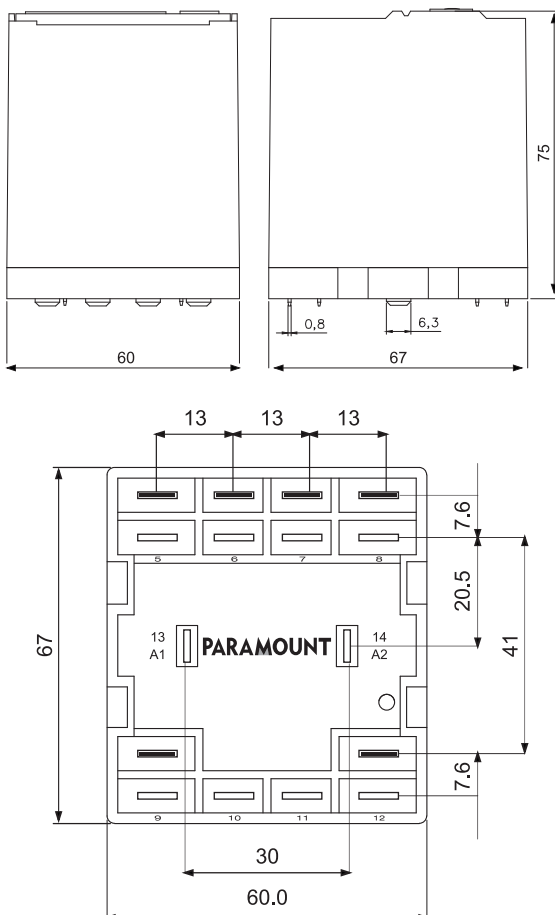
10A @ 220 VDC 1



Graph Max. DC Load



Dimensions in mm.



Contact Specifications

Materials	: Standard	: AgCuNi
Contact Configuration	: 4 NO	
Nominal Switching Capacity	: 250 VAC 20A AC1	30 VDC 20A DC1
Electric Life Expectancy	: 250 VAC 20A AC1	apprx. 50,000 operations (360 operations / h)
Contact Make and Carry	: 30A for 3 secs / 5A @ 660VAC	
Switching Current Range	: 500mA to 20A	
Max. Switching Current	: 50A for 20ms	
Coil power	: 8 VA (W) to 5000 VA	
Contact Resistance	: 20m Ω	

Specifications

Mechanical Life Expectancy	: 20 Million operations
Mechanical Switching Frequency	: 20 Hz
Pull-in-time	: 10 ms at DC / 6-14 ms at AC
Release Time	: 2.5 ms at DC / 2-12 ms at AC
Bounce time normally	: 2.0 ms at DC / 3-8 ms at AC
Shock Resistance	: AK : > 10g
Vibration Resistance	: 10-55 Hz, AK : 10g, RK: 3g
Test Voltage, coil/contact (1.2/50 μs)	: > 2.5 KV
Test voltage, open contact	: 2.5 KV
Insulation Resistance	: 100 M ohms Min. @ 500VDC
Weight	: app. 150 g
Insulation Situation	: any
Ambient Temperature	: - 40° C to + 60° C
Protection Standard	: IP 40

Standard coils for DC & AC (other voltages on enquiry)

Rated Voltage	Pull-in Voltage @ 20° C	Drop Out Voltage	Nominal Current mA	Resistance in Ω at 20° C	Tolerance %
12 VDC	9.00	≥ 1.2	58.50	410	± 10%
24 VDC	18.00	≥ 1.2	58.50	410	± 10%
48 VDC	36.00	≥ 2.4	30.00	1600	± 10%
110 VDC	82.50	≥ 5.5	13.80	8000	± 10%
220 VDC	165.00	≥ 10.0	7.00	32000	± 10%

12 VAC	10.20	≥ 0.6	260.00	10	± 10%
24 VAC	20.40	≥ 1.2	130.00	40	± 10%
48 VAC	40.80	≥ 2.4	60.00	180	± 10%
110 VAC	93.50	≥ 5.5	29.00	950	± 10%
230 VAC	187.00	≥ 11.0	14.00	3900	± 10%

Standard Types

AC : 12, 24, 48, 110, 230 VAC - 50Hz

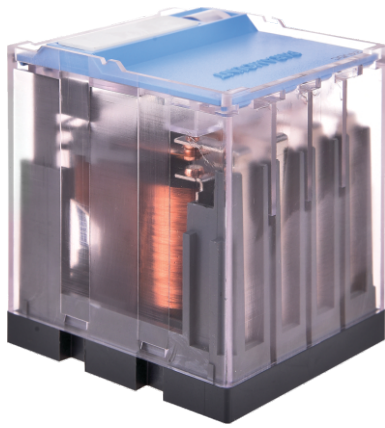
P = LED Indicator across the coil	P4-20-4A-M-P	... VAC
V = Variastor for 110 / 230 VAC	P4-20-4A-M-PV	... VAC
R = RC Circuit for (110 / 230VAC)	P4-20-4A-M-PR	... VAC

DC : 12, 24, 48, 110, 220 VDC

P = LED Indicator across the coil	P4-20-4A-M-P	... VDC
W = Free Wheeling Diode	P4-20-4A-M-PW	... VDC

Suitable Sockets : S4D-2YA

Approvals



P4-20-2X-M

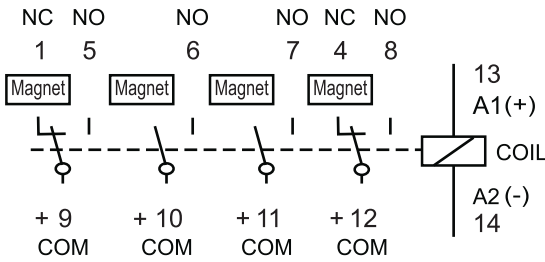
DC Switching 2NO + 2NC Relay

20A @ 250 VAC 1
20A @ 30 VDC 1

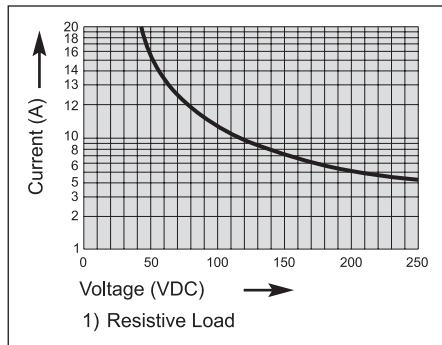
10A @ 220 VDC 1

Contact Specifications

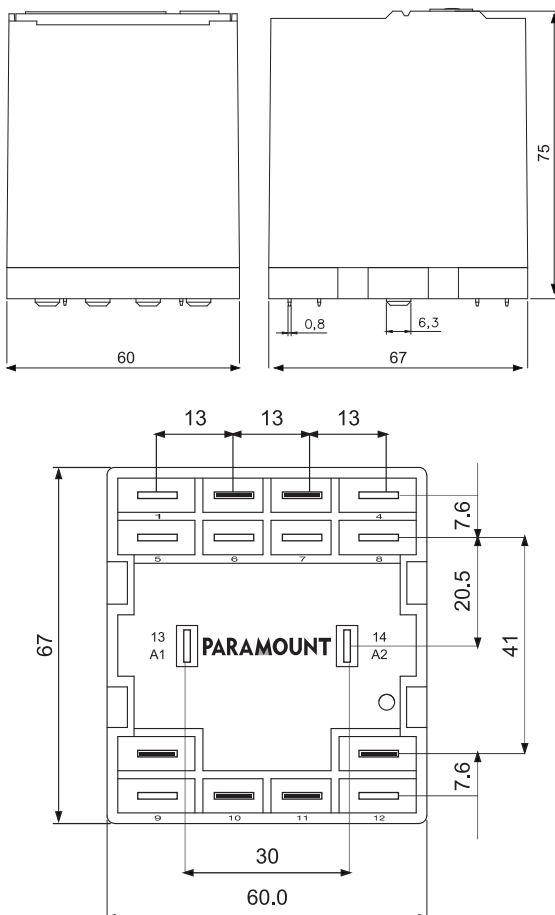
Materials :	Standard	:	AgCuNi
Contact Configuration	:	2NO + 2NC	
Nominal Switching Capacity	:	250 VAC 20A AC1 30 VDC 20A DC1	
Electric Life Expectancy	:	250 VAC 20A AC1 apprx. 50,000 operations (360 operations / h)	
Contact Make and Carry	:	30A for 3 secs / 5A @ 660VAC	
Switching Current Range	:	500mA to 20A	
Max. Switching Current	:	50A for 20ms	
Coil power	:	8 VA (W) to 5000 VA	
Contact Resistance	:	20m Ω	



Graph Max. DC Load



Dimensions in mm.



Specifications

Mechanical Life Expectancy	:	20 Million operations
Mechanical Switching Frequency	:	20 Hz
Pull-in-time	:	10 ms at DC / 6-14 ms at AC
Release Time	:	2.5 ms at DC / 2-12 ms at AC
Bounce time normally	:	2.0 ms at DC / 3-8 ms at AC
Shock Resistance	:	AK : > 10g
Vibration Resistance	:	10-55 Hz, AK : 10g, RK: 3g
Test Voltage, coil/contact (1.2/50 μs)	:	> 2.5 KV
Test voltage, open contact	:	2.5 KV
Insulation Resistance	:	100 M ohms Min. @ 500VDC
Weight	:	app. 150 g
Insulation Situation	:	any
Ambient Temperature	:	- 40° C to + 60° C
Protection Standard	:	IP 40

Standard coils for DC & AC (other voltages on enquiry)

Rated Voltage	Pull-in Voltage @ 20° C	Drop Out Voltage	Nominal Current mA	Resistance in Ω at 20° C	Tolerance %
12 VDC	9.00	≥ 1.2	58.50	410	± 10%
24 VDC	18.00	≥ 1.2	58.50	410	± 10%
48 VDC	36.00	≥ 2.4	30.00	1600	± 10%
110 VDC	82.50	≥ 5.5	13.80	8000	± 10%
220 VDC	165.00	≥ 10.0	7.00	32000	± 10%

12 VAC	10.20	≥ 0.6	260.00	10	± 10%
24 VAC	20.40	≥ 1.2	130.00	40	± 10%
48 VAC	40.80	≥ 2.4	60.00	180	± 10%
110 VAC	93.50	≥ 5.5	29.00	950	± 10%
230 VAC	187.00	≥ 11.0	14.00	3900	± 10%

Standard Types

AC : 12, 24, 48, 110, 230 VAC - 50Hz

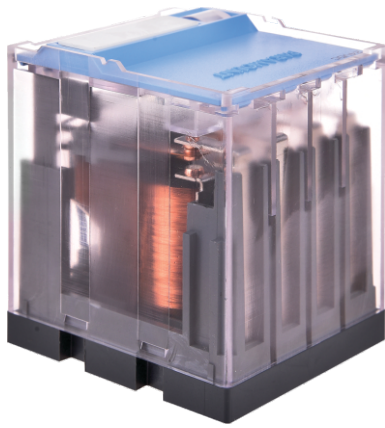
P = LED Indicator across the coil	P4-20-2X-M-P	... VAC
V = Variastor for 110 / 230 VAC	P4-20-2X-M-PV	... VAC
R = RC Circuit for (110 / 230VAC)	P4-20-2X-M-PR	... VAC

DC : 12, 24, 48, 110, 220 VDC

P = LED Indicator across the coil	P4-20-2X-M-P	... VDC
W = Free Wheeling Diode	P4-20-2X-M-PW	... VDC

Suitable Sockets : S4D-2X

Approvals



P4-20-2Y-M

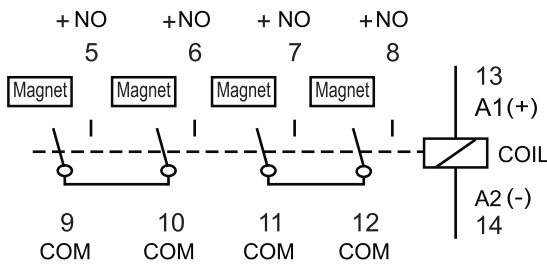
DC Switching 2NO Double Break Relay

20A @ 250 VAC 1
20A @ 30 VDC 1

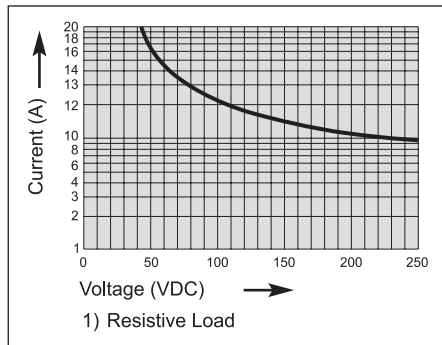
10A @ 220 VDC 1

Contact Specifications

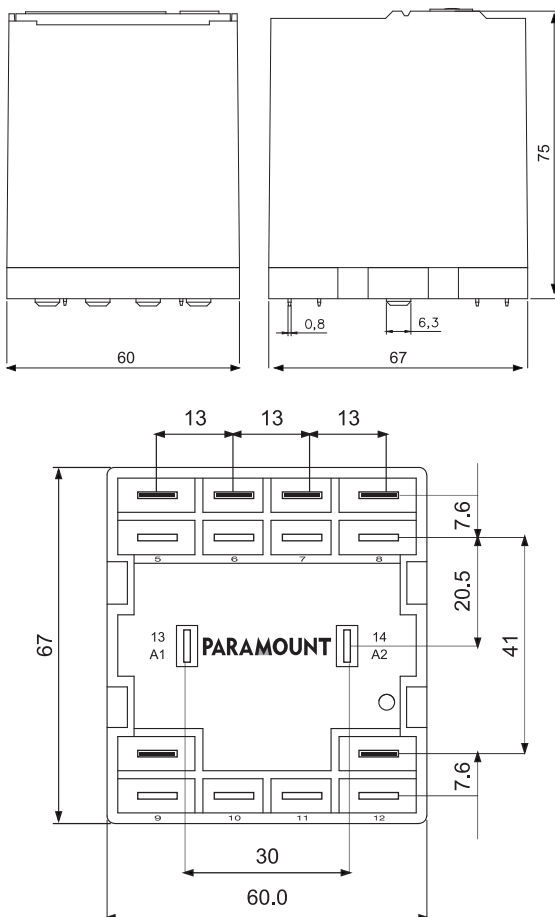
Materials :	Standard	:	AgCuNi
Contact Configuration	:	2NO Double Break	
Nominal Switching Capacity	:	250 VAC 20A AC1 30 VDC 20A DC1	
Electric Life Expectancy	:	250 VAC 20A AC1 apprx. 50,000 operations (360 operations / h)	
Contact Make and Carry	:	30A for 3 secs / 5A @ 660VAC	
Switching Current Range	:	500mA to 20A	
Max. Switching Current	:	50A for 20ms	
Coil power	:	8 VA (W) to 5000 VA	
Contact Resistance	:	20m Ω	



Graph Max. DC Load



Dimensions in mm.



Specifications

Mechanical Life Expectancy	:	20 Million operations
Mechanical Switching Frequency	:	20 Hz
Pull-in-time	:	10 ms at DC / 6-14 ms at AC
Release Time	:	2,5 ms at DC / 2-12 ms at AC
Bounce time normally	:	2,0 ms at DC / 3-8 ms at AC
Shock Resistance	:	AK : > 10g
Vibration Resistance	:	10-55 Hz, AK : 10g, RK: 3g
Test Voltage, coil/contact (1.2/50 μs)	:	> 2.5 KV
Test voltage, open contact	:	2.5 KV
Insulation Resistance	:	100 M ohms Min. @ 500VDC
Weight	:	app. 150 g
Insulation Situation	:	any
Ambient Temperature	:	- 40° C to + 60° C
Protection Standard	:	IP 40

Standard coils for DC & AC (other voltages on enquiry)

Rated Voltage	Pull-in Voltage @ 20° C	Drop Out Voltage	Nominal Current mA	Resistance in Ω at 20° C	Tolerance %
12 VDC	9.00	≥ 1.2	58.50	410	± 10%
24 VDC	18.00	≥ 1.2	58.50	410	± 10%
48 VDC	36.00	≥ 2.4	30.00	1600	± 10%
110 VDC	82.50	≥ 5.5	13.80	8000	± 10%
220 VDC	165.00	≥ 10.0	7.00	32000	± 10%

12 VAC	10.20	≥ 0.6	260.00	10	± 10%
24 VAC	20.40	≥ 1.2	130.00	40	± 10%
48 VAC	40.80	≥ 2.4	60.00	180	± 10%
110 VAC	93.50	≥ 5.5	29.00	950	± 10%
230 VAC	187.00	≥ 11.0	14.00	3900	± 10%

Standard Types

AC : 12, 24, 48, 110, 230 VAC - 50Hz

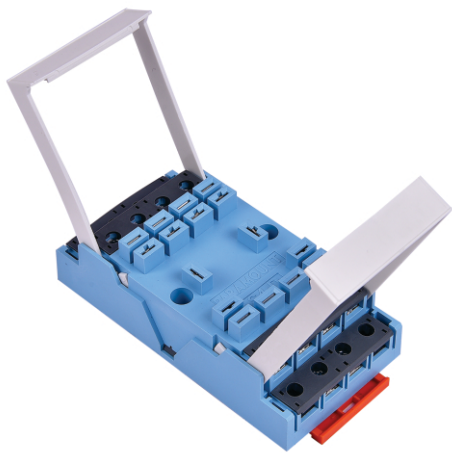
P = LED Indicator across the coil	P4-20-2Y-M-P	... VAC
V = Variastor for 110 / 230 VAC	P4-20-2Y-M-PV	... VAC
R = RC Circuit for (110 / 230VAC)	P4-20-2X-M-PR	... VAC

DC : 12, 24, 48, 110, 220 VDC

P = LED Indicator across the coil	P4-20-2Y-M-P	... VDC
W = Free Wheeling Diode	P4-20-2Y-M-PW	... VDC

Suitable Sockets : S4D-2YA

Approvals

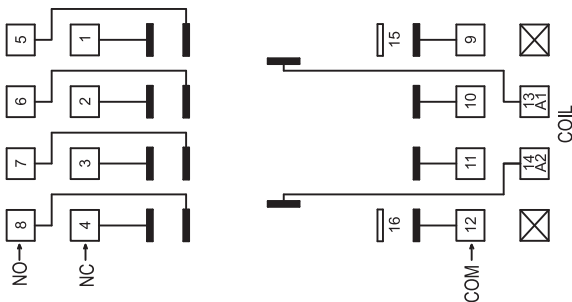


S4D

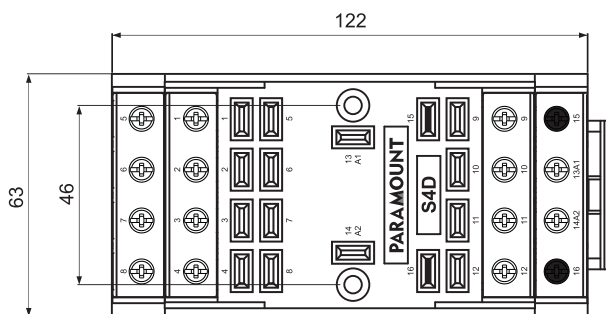
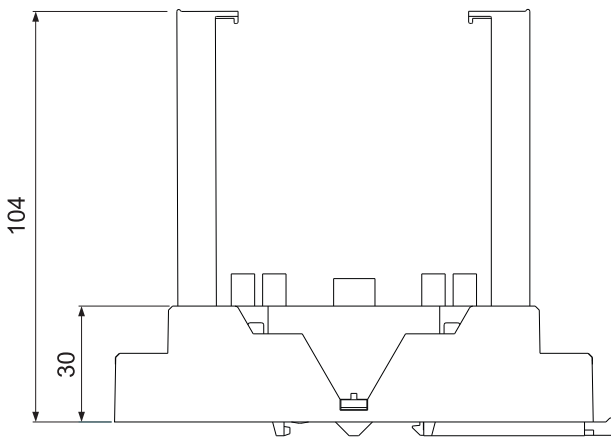
Only
63 mm
WIDE

Socket for P4 4CO Relays
DIN Rail or Panel Mountable

Wiring Diagram



Socket Dimension in mm



Specifications

Poles	4 Change over contacts (16 pins)
Nominal Load :	250 VAC 20A AC1 30 VDC 20A DC1 110 VDC 7A DC1 220 VDC 5A DC1

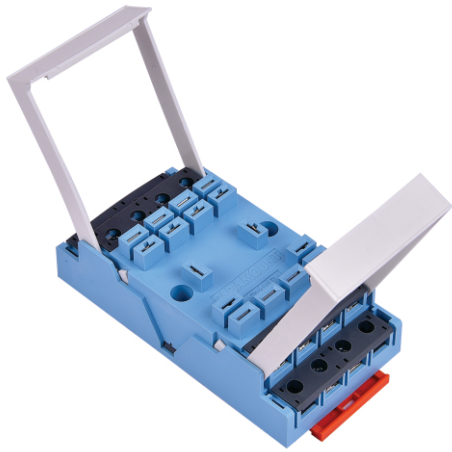
Insulation : Di-Electric Strength, 1minute	
Between Contact and Coil	2.5 KV
Between all terminals and DIN Rail	2.5 KV
Between adjacent terminals	2.5 KV
Max. Screw Torque	1.2 Nm
Screw Dimension	M4, Pozi
Weight Approx.	180 gms

Other Aspects

DIN Rail / Panel Mountable
EN / DIN Sequential numbering according to
EN 60947 & IEC 61810

Suitable Relays : P4-4, P4-4M

Approvals

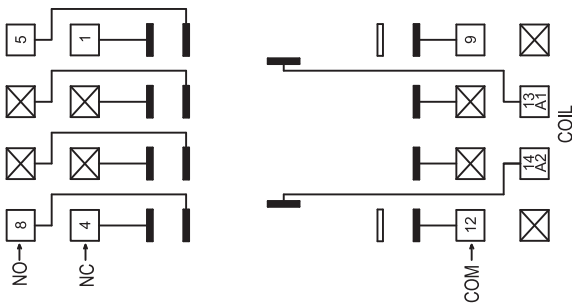


S4D-2

Only
63 mm
WIDE

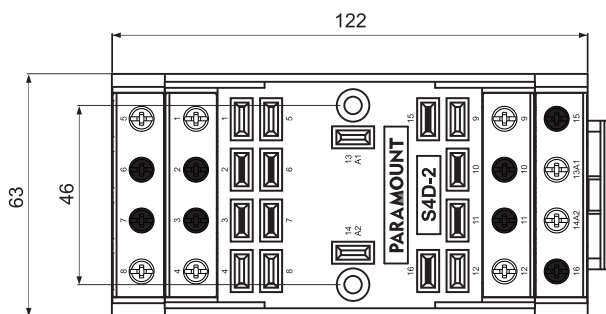
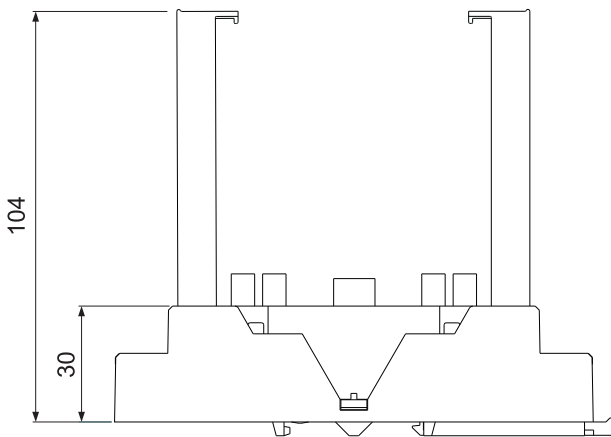
Socket for P4 2CO Relays
DIN Rail or Panel Mountable

Wiring Diagram



Socket Dimension

in mm



Specifications

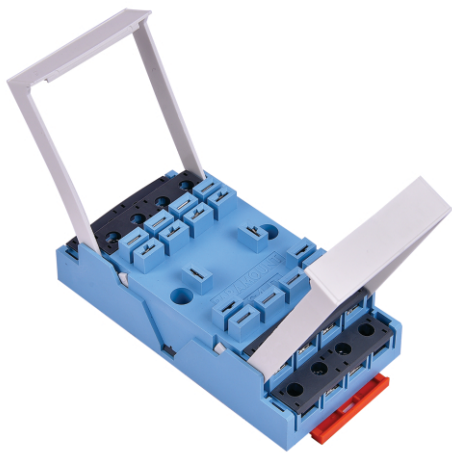
Poles	2 Change over contacts
Nominal Load :	250 VAC 20A AC1 30 VDC 20A DC1
Insulation : Di-Electric Strength, 1minute	
Between Contact and Coil	2.5 KV
Between all terminals and DIN Rail	2.5 KV
Between adjaceNent terminals	2.5 KV
Max. Screw Torque	1.2 Nm
Screw Dimension	M4, Pozi
Weight Approx.	180 gms

Other Aspects

DIN Rail / Panel Mountable
EN / DIN Sequential numbering according to
EN 60947 & IEC 61810

Suitable Relays : P4-20-2, P4-20-2M

Approvals

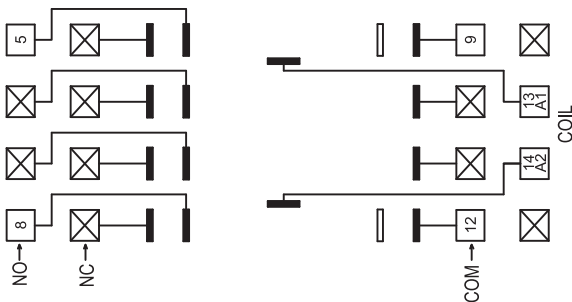


S4D-YA

Only
63 mm
WIDE

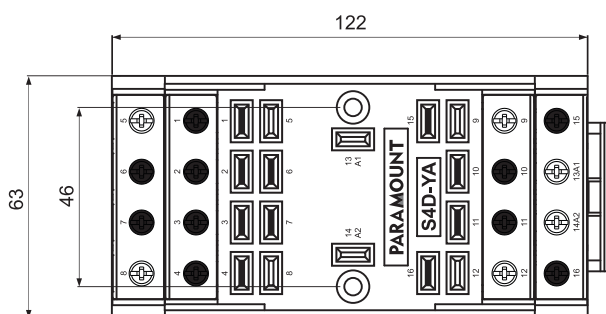
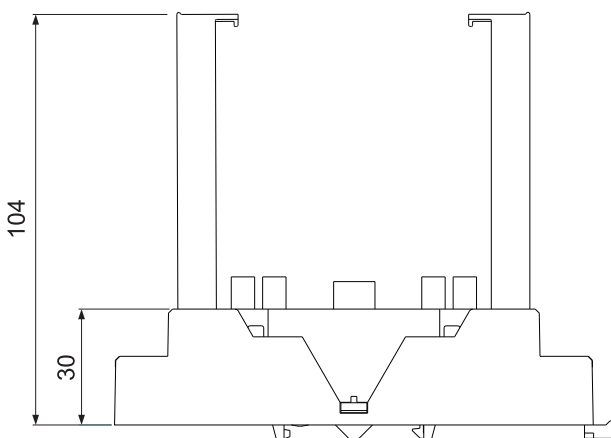
**Socket for P4 2 NO & 1 NO
Double Break Relays
DIN Rail or Panel Mountable**

Wiring Diagram



Socket Dimension

in mm



Specifications

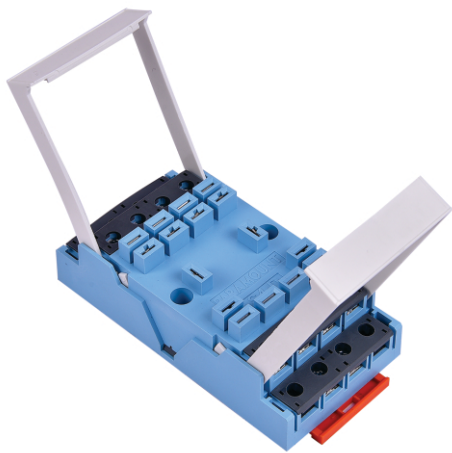
Poles	2 NO & 1 NO Double Break Contact
Nominal Load :	250 VAC 20A AC1 30 VDC 20A DC1
Insulation : Di-Electric Strength, 1minute	
Between Contact and Coil	2.5 KV
Between all terminals and DIN Rail	2.5 KV
Between adjaceNent terminals	2.5 KV
Max. Screw Torque	1.2 Nm
Screw Dimension	M4, Pozi
Weight Approx.	180 gms

Other Aspects

DIN Rail / Panel Mountable
EN / DIN Sequential numbering according to
EN 60947 & IEC 61810

Suitable Relays :
P4-20-Y, P4-20-2A, P4-20-Y-M, P4-20-2A-M,

Approvals

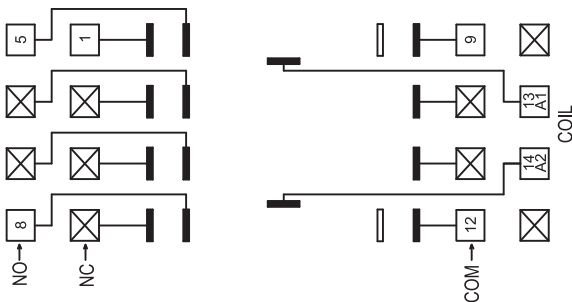


S4D-X

Only
63 mm
WIDE

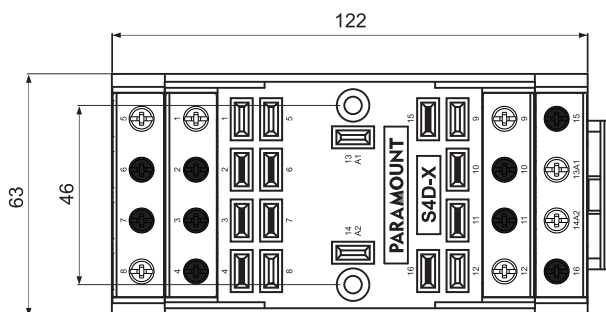
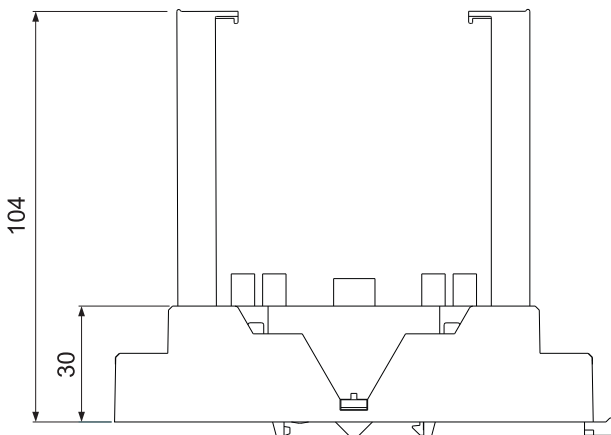
**Socket for P4 1 NO + 1 NC Relays
DIN Rail or Panel Mountable**

Wiring Diagram



Socket Dimension

in mm



Specifications

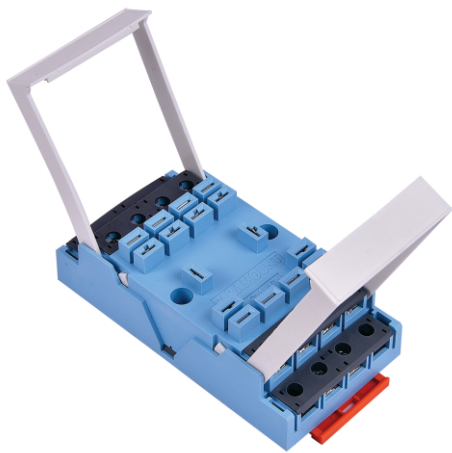
Poles	1 NO + 1 NC Contact
Nominal Load :	250 VAC 20A AC1 30 VDC 20A DC1
Insulation : Di-Electric Strength, 1minute	
Between Contact and Coil	2.5 KV
Between all terminals and DIN Rail	2.5 KV
Between adjaceNent terminals	2.5 KV
Max. Screw Torque	1.2 Nm
Screw Dimension	M4, Pozi
Weight Approx.	180 gms

Other Aspects

DIN Rail / Panel Mountable
EN / DIN Sequential numbering according to
EN 60947 & IEC 61810

Suitable Relays : P4-20-X, P4-20-X-M

Approvals

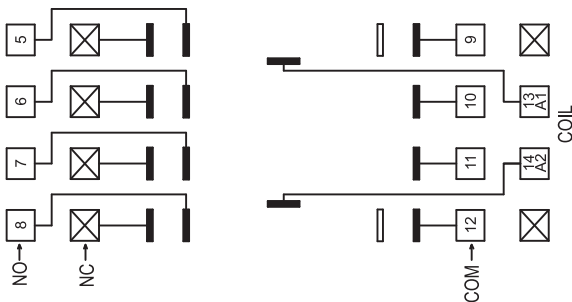


S4D-2YA

Only
63 mm
WIDE

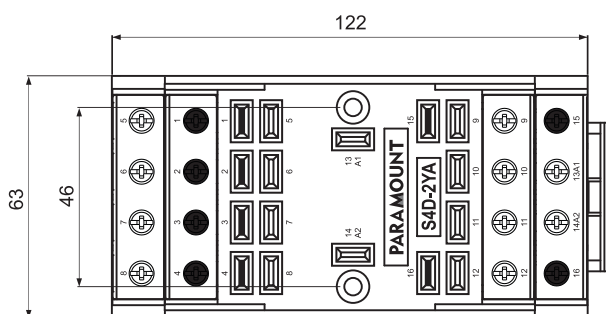
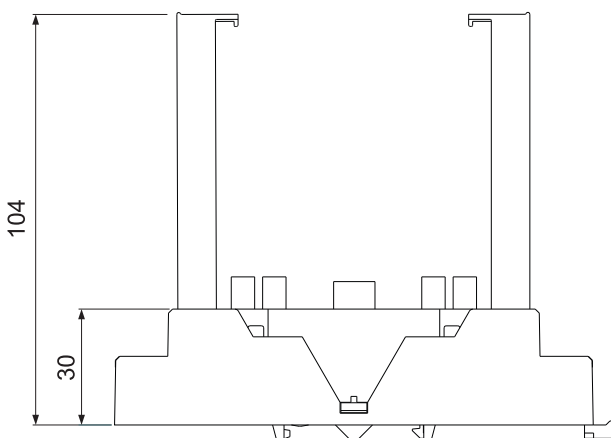
**Socket for P4 4 NO & 2 NO
Double Break Relays
DIN Rail or Panel Mountable**

Wiring Diagram



Socket Dimension

in mm



Specifications

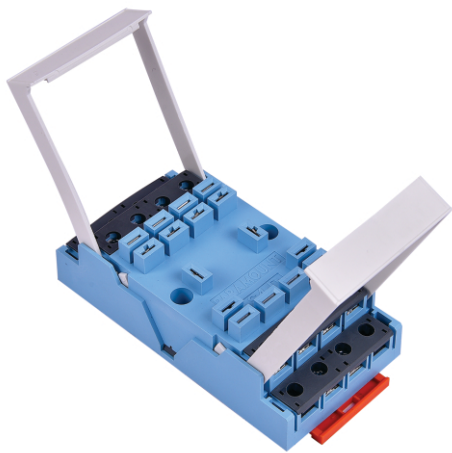
Poles	4 NO & 2 NO Double Break Contact
Nominal Load :	250 VAC 20A AC1 30 VDC 20A DC1
Insulation : Di-Electric Strength, 1minute	
Between Contact and Coil	2.5 KV
Between all terminals and DIN Rail	2.5 KV
Between adjaceNent terminals	2.5 KV
Max. Screw Torque	1.2 Nm
Screw Dimension	M4, Pozi
Weight Approx.	180 gms

Other Aspects

DIN Rail / Panel Mountable
EN / DIN Sequential numbering according to
EN 60947 & IEC 61810

Suitable Relays :
P4-20-4A, P4-20-4A-M, P4-20-2Y, P4-20-2YM

Approvals

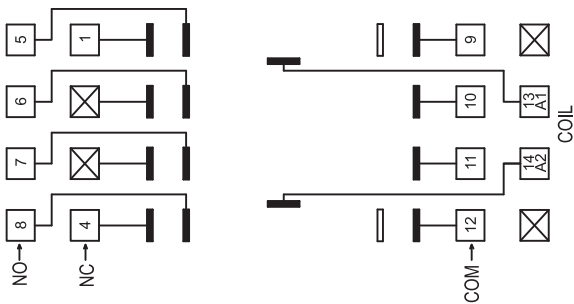


S4D-2X

Only
63 mm
WIDE

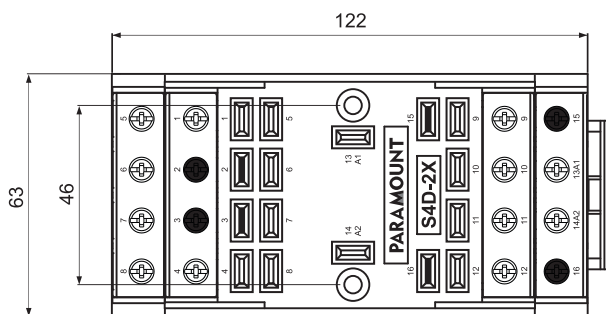
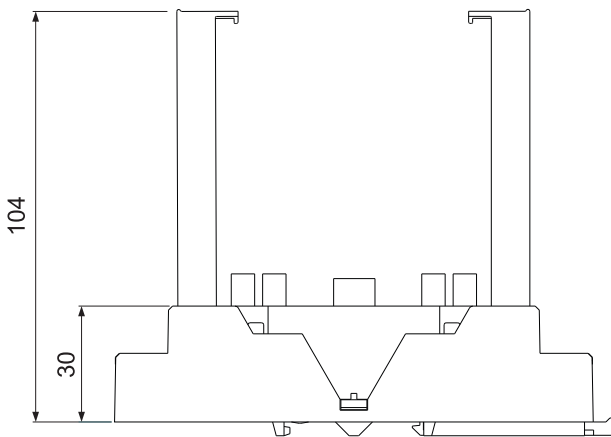
**Socket for P4 2 NO + 2 NC Relays
DIN Rail or Panel Mountable**

Wiring Diagram



Socket Dimension

in mm



Specifications

Poles	2 NO + 2 NC Contact
Nominal Load :	250 VAC 20A AC1 30 VDC 20A DC1
Insulation : Di-Electric Strength, 1minute	
Between Contact and Coil	2.5 KV
Between all terminals and DIN Rail	2.5 KV
Between adjaceNent terminals	2.5 KV
Max. Screw Torque	1.2 Nm
Screw Dimension	M4, Pozi
Weight Approx.	180 gms

Other Aspects

DIN Rail / Panel Mountable
EN / DIN Sequential numbering according to
EN 60947 & IEC 61810

Suitable Relays : P4-20-2X, P4-20-2X-M

Approvals

Ordering Information for P4 Series Relays

P4 - - - - - - - -
 1 2 3 4 5 6 7 8

1. Relay Type

Blank : NIL

2. Contact Rating

10 : 10A (only for 4 change over)
 20 : 20A

3. Contact Type

2 : 2 Change Over
 2A : 2 NO
 X : 1 NO 1 NC
 Y : 1 NO Double Break
 3 : 3 Change Over
 3A : 3 NO
 4 : 4 Change Over
 4A : 4 NO
 2X : 2 NO 2 NC
 2Y : 2 NO Double Break

5. Features

Blank : No Features / Standard
 F : Mechanical Flag Indicator
 P : LED Indicator across the coil
 W : Free Wheeling Diode
 R : RC (Snubber circuit)
 B : Bridge Rectifier

6. Special Types

Blank : Standard
 M : Magnetic Blow Out (2CO & 4CO)
 L : Latching Relays (common negative)
 L2 : Latching Relays (independent coils)

7. Contact Material

Blank : AgCuNi (20A)

8. Rated coil Voltage

12 / 24 / 48 / 110 / 220 VDC
 12 / 24 / 48 / 115 / 230 VAC

Ordering Information for Sockets for P4 Relays

S4D-2	Din Rail Mountable Socket	For General purpose & DC Switching 2 pole Relays
S4D-YA	Din Rail Mountable Socket	For General purpose & DC Switching 2 NO & 1 NO Double Break Relays
S4D-X	Din Rail Mountable Socket	For General purpose & DC Switching 1 NO + 1 NC Relays
S4D	Din Rail Mountable Socket	For General purpose & DC Switching 4 pole Relays
S4D-2YA	Din Rail Mountable Socket	For General purpose & DC Switching 4 NO & 2 NO Double Break Relays
S4D-2X	Din Rail Mountable Socket	For General purpose & DC Switching 2 NO + 2 NC Relays