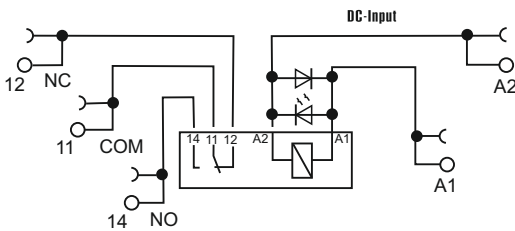


S5PD / S5PD-R

Only
6 mm
WIDE

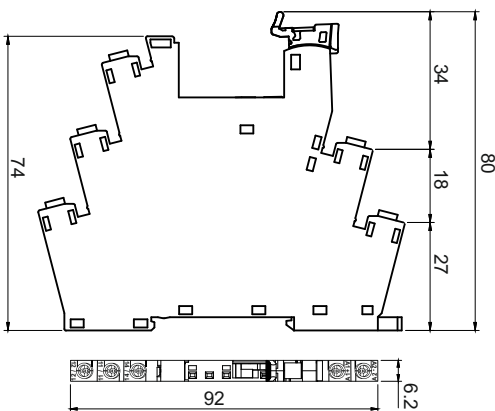
**Input / Output Slim Sockets (6A)
for 1CO Slim Relays DIN Rail Mountable
6 A 230V AC1**

Wiring Diagram



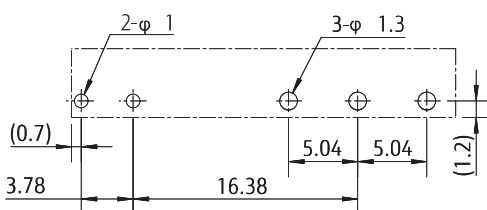
Socket Dimension

in mm



Suitable Relays Pitch

in mm



PCB Mounting Holes (Bottom View)

Other Aspects

Weight Approx. 25 gms
DIN Rail
Removable White Marking Label
EN / DIN Sequential Numbering according to
EN 60947 & IEC 61810

Specifications

No. of Poles	
Input Voltage (Socket) : Blank	24VAC/DC
Input Voltage (Socket) : 1	110VAC/DC
Input Voltage (Socket) : 2	230VAC/DC
Output Voltage (Relay)	24VDC
Output Contact Rating (Relay)	6A @ 250VAC / 24VDC
Insulation : De-Electric Strength , 1 minute	
Between all terminals and DIN Rail	5 KV
Brass TIN plated Screw	Yes
Max. Screw Torque	0.6 Nm
Screw Dimensions	7mm

Wire In-lets Capacity

Suitable Relays

1. Fujitsu Relays - FTRLY-CA024V
2. Hongfa Relays - HF41F/24-25
3. Paramount Relays - P5P

Ordering Information

24VAC / DC (without relays)	S5PD
24VAC / DC (with Fujitus Relays)	S5PD-R1
24VAC / DC (with Hongfa Relays)	S5PD-R2
24VAC / DC (with Paramount Relays)	S5PD-R3
110VAC / DC (without relays)	S5PD-1
110VAC / DC (with Fujitus Relays)	S5PD-1-R1
110VAC / DC (with Hongfa Relays)	S5PD-1-R2
110VAC / DC (with Paramount Relays)	S5PD-1-R3
230VAC / DC (without relays)	S5PD-2
230VAC / DC (with Fujitus Relays)	S5PD-2-R1
230VAC / DC (with Hongfa Relays)	S5PD-2-R2
230VAC / DC (with Paramount Relays)	S5PD-2-R3

Approvals

