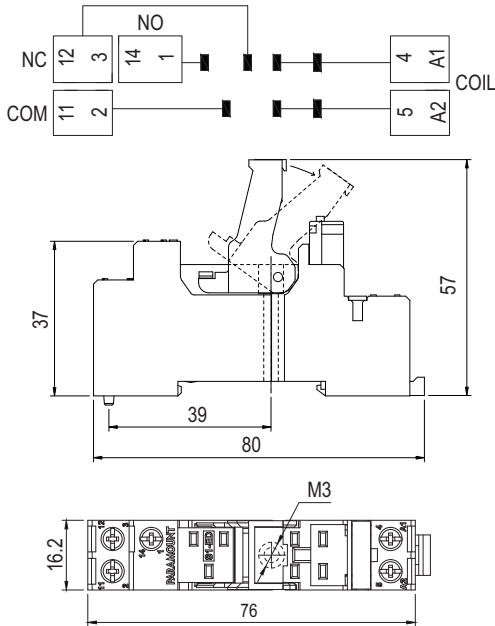


S1ED

Only
16.2 mm
WIDE

**Input / Output Socket [10A] for
P1 CO Relays DIN Rail or Panel Mountable**

Dimensions in mm.



Specifications

Poles	1 Change Over Contact
Nominal load :	10A / 250V
Insulation: Di-electric strength, 1minute	
Between contact and coil	5 KV
Between all terminals and DIN Rail	5 KV
Between adjacent terminals	3 KV
Brass Tin Plated Screw	0.3 x 1 mm
Max. screw torque	1.2 Nm
Screw dimensions	M3, Pozi

Other Aspects

Weight Approx.	24 gms
DIN Rail / Panel Mountable	
Integrated Relay Hold Down Clip	
Removable White Marking Label	
EN / DIN Sequential Numbering according to EN 60947 & IEC 61810	

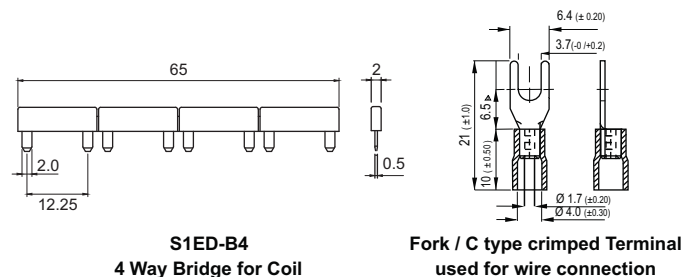
Accessories 1



S1ED-B4

C Terminal

Dimensions in mm.



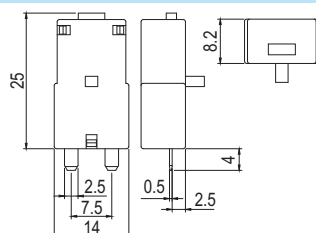
S1ED-B4
4 Way Bridge for Coil

Fork / C type crimped Terminal
used for wire connection

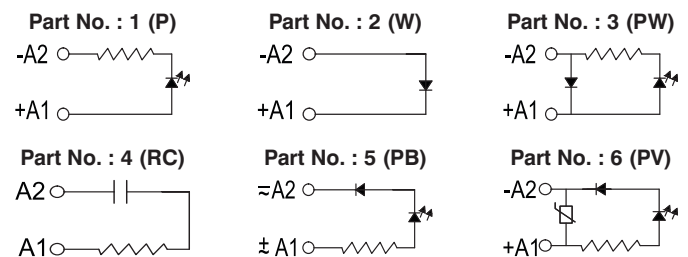
Accessories 2 Detachable Module P/N

P = LED Indicator	- 1
W = Free Wheeling Diode	- 2
PW = LED & Free Wheeling Diode	- 3
RC = RC (115/230VAC)	- 4
PB = LED with Bridge Rectifier (24V/48VDC)	- 5
PV = LED with Variastor (115/230VAC)	- 6

Dimensions in mm.



Module Wiring Details & Part Nos.



Suitable Relays : P1, P1-T, P1-M

Ordering Details

S1ED-3-B4-C = S1ED Socket with LED & Free Wheeling Diode Detachable Module with 4 way Bridges with C Terminals

Approvals

